

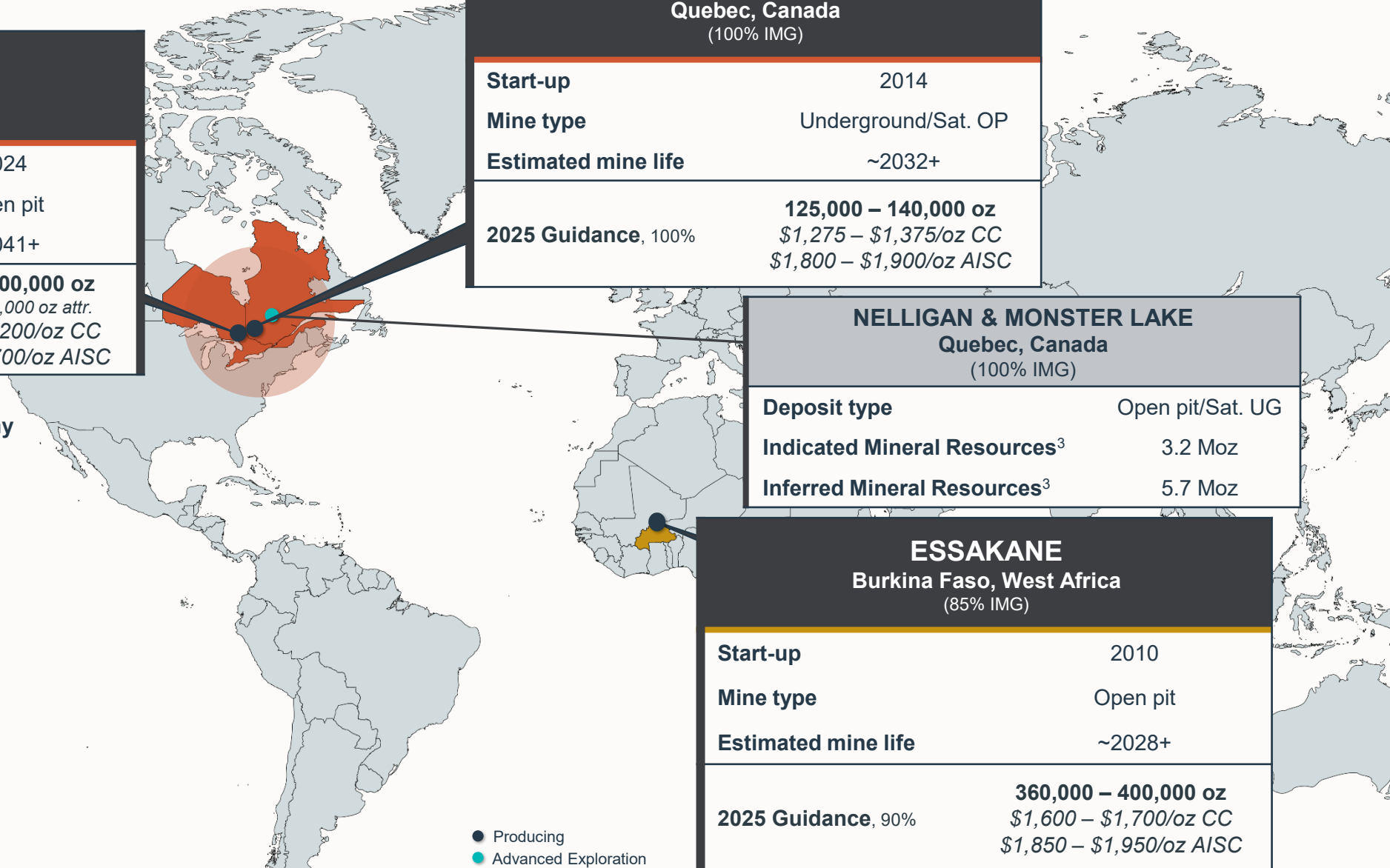
Operations Overview

CÔTÉ GOLD Ontario, Canada (70% IMG 30% SMM ¹)	
Start-up	2024
Mine type	Open pit
Estimated mine life	~2041+
2025 Guidance, 100%	360,000 – 400,000 oz 250,000 – 280,000 oz attr. \$1,100 – \$1,200/oz CC \$1,600 – \$1,700/oz AISC

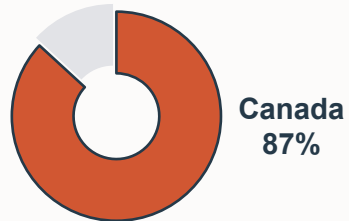
WESTWOOD Quebec, Canada (100% IMG)	
Start-up	2014
Mine type	Underground/Sat. OP
Estimated mine life	~2032+
2025 Guidance, 100%	125,000 – 140,000 oz \$1,275 – \$1,375/oz CC \$1,800 – \$1,900/oz AISC

NELLIGAN & MONSTER LAKE Quebec, Canada (100% IMG)	
Deposit type	Open pit/Sat. UG
Indicated Mineral Resources ³	3.2 Moz
Inferred Mineral Resources ³	5.7 Moz

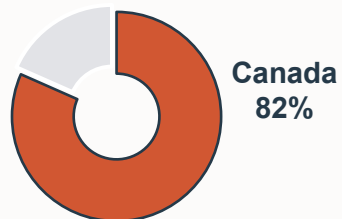
ESSAKANE Burkina Faso, West Africa (85% IMG)	
Start-up	2010
Mine type	Open pit
Estimated mine life	~2028+
2025 Guidance, 90%	360,000 – 400,000 oz \$1,600 – \$1,700/oz CC \$1,850 – \$1,950/oz AISC



Mineral Resources³ by Geography



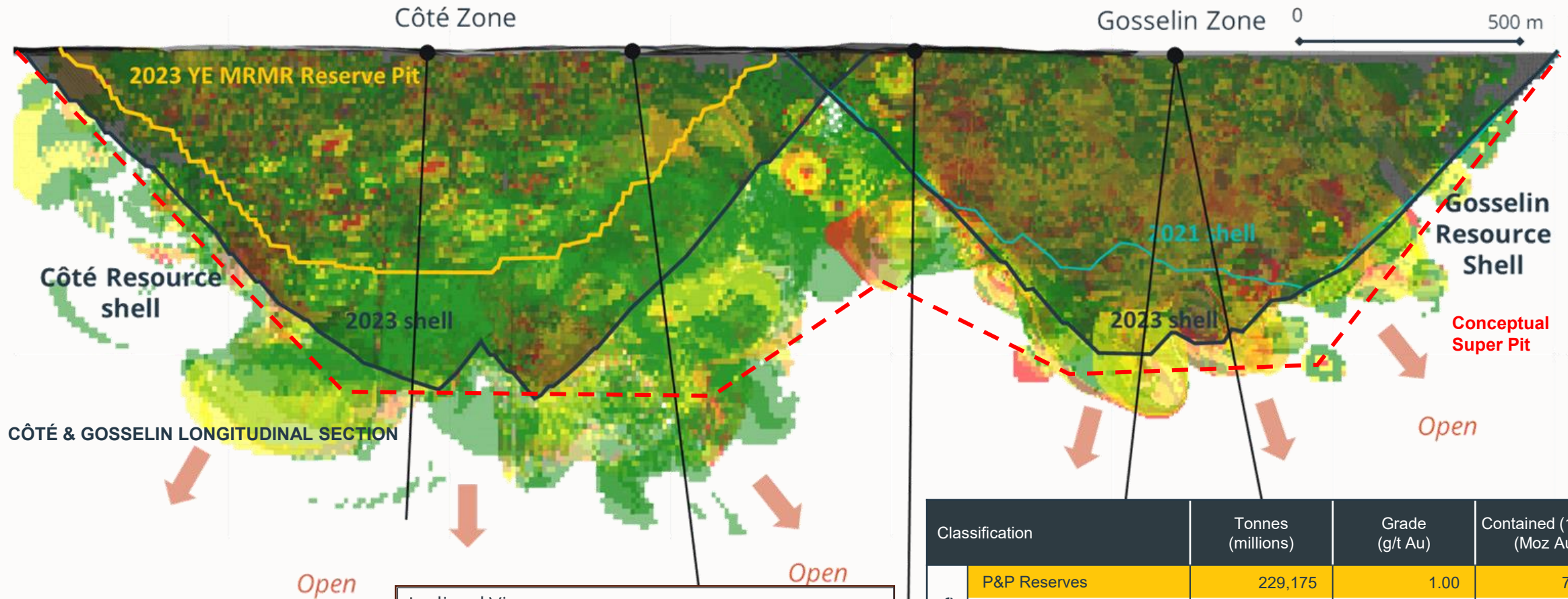
Net Asset Value⁴ by Geography



● Producing
● Advanced Exploration

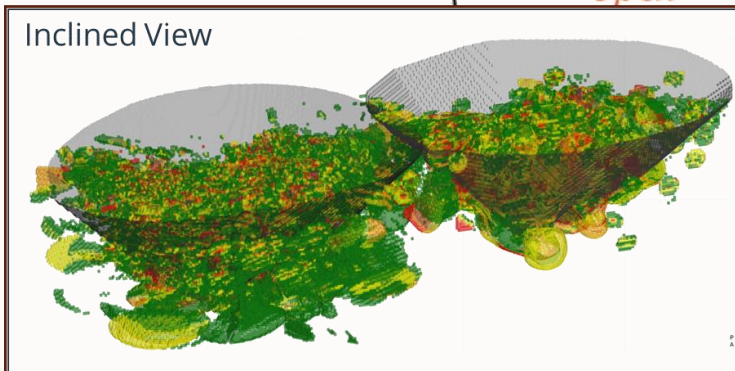
1. Côté Gold is owned as a 70/30 JV between IMG and Sumitomo Metal Mining Co. Ltd. and carries a 7.5% NPI royalty.
 2. CC = cash costs; AISC = All-in sustaining costs; These are non-GAAP financial measure. Refer to "Non-GAAP Financial Measures" on slide #3
 3. M&I resources inclusive of mineral reserves.
 4. Net Asset Value is estimated using the average of consensus estimates

Côté & Gosselin



Block Model Gold Grades

0.3 - 0.5 g/t Au	1.0 - 2.0 g/t Au
0.5 - 0.7 g/t Au	2.0 - 5.0 g/t Au
0.7 - 1.0 g/t Au	> 5.0 g/t Au

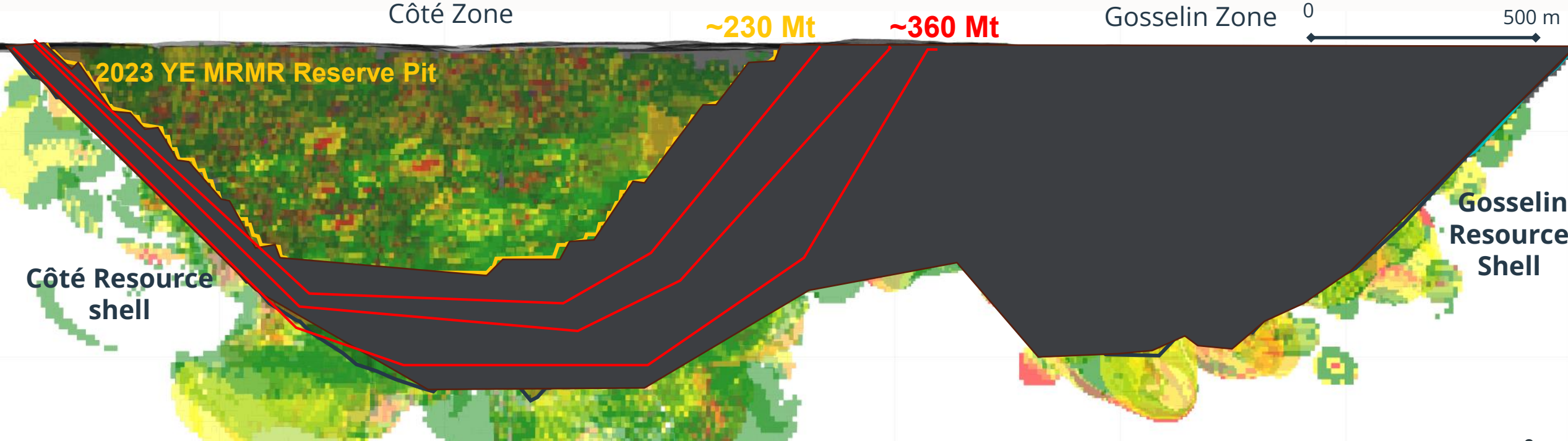
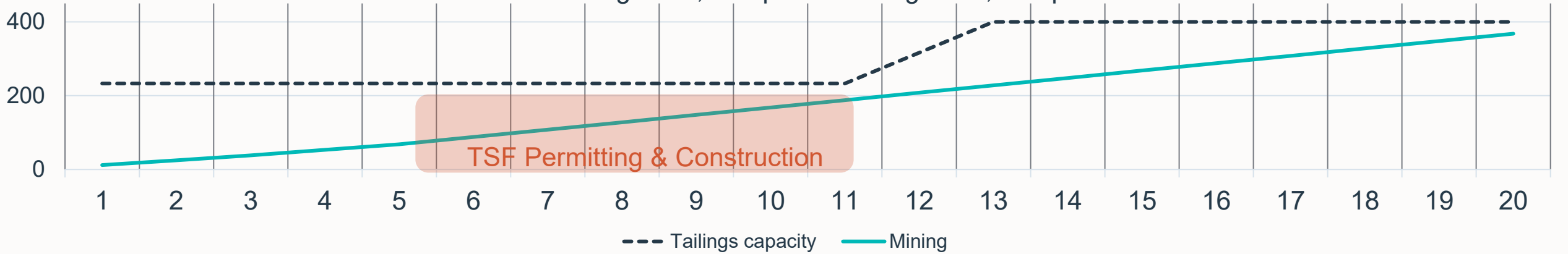


Classification		Tonnes (millions)	Grade (g/t Au)	Contained (100%) (Moz Au)
Côté	P&P Reserves	229,175	1.00	7,341
	M&I Resources (incl.) ³	438,544	0.84	11,785
	Inferred	60,362	0.61	1,177
Goss.	Indicated	161,300	0.85	4,420
	Inferred	123,900	0.75	2,980
Total	P&P Reserves	229,175	1.00	7,341
	M&I Resources (incl.) ³	599,844	0.84	16,205
	Inferred	184,262	0.70	4,157

1. Refer to news release dated February 20, 2025 | 2. M&I resources inclusive of mineral reserves.

Côte & Gosselin

Conceptual Timing for TSF Expansion
based on milling at 36,000 tpd increasing to 50,000 tpd in Yr.5



1. Refer to news release dated February 20, 2023. 2. M&I resources inclusive of mineral reserves.