



Spanish Mountain Gold Ltd.

Mining Forum Europe

March 31 - April 2, 2025

TSX-V: **SPA** | OTCQB: **SPAUF** | FSE: **S3Y**

Cautionary Statement

This presentation under no circumstances is to be construed to be an offering of securities of the Company. Neither this presentation nor its delivery to the recipient will constitute an offer to sell, or the solicitation of an offer to buy the assets and or securities described herein. This presentation and the information contained herein has been prepared and provided solely to assist interested parties in making their own evaluation of the Company and its business and does not purport to contain all the information that a recipient may require. A recipient should conduct their own investigation and analysis of the Company, its business and the information contained herein. A recipient is invited to either on their own or in consultation with their professional advisors, ask questions and receive answers from the directors and officers of the Company in order to obtain any additional information that they consider necessary for the purpose of making an informed investment decision. As a recipient of this presentation, you agree that you will rely solely on your own due diligence with respect to any potential future investment in the Company.

Certain of the statements and information contained within this presentation constitute "forward-looking statements" or "forward-looking information", collectively referred to as "forward-looking information". Forward-looking information is subject to a variety of known and unknown risks, uncertainties and other factors that could cause actual events or results to differ materially from those reflected in forward-looking information, including, without limitation, risks relating to results from infill and exploration drilling, geotechnical studies, metallurgical studies, planning of tailings facilities, access to power supply, fluctuations in the spot and forward price of gold or certain other commodities, timing of receipt of permits and regulatory approvals, the sufficiency of the Company's capital to finance the Company's operations, geological interpretations and potential mineral recovery processes, changes in national and local government legislation, taxation, controls, regulations and political or economic developments in Canada, business opportunities that may be presented to, or pursued by, the Company, operating or technical difficulties in connection with mining activities. In addition, there are risks and hazards associated with the business of gold exploration, development and mining, including environmental hazards, industrial accidents, unusual or unexpected formations, pressures, cave-ins, flooding and gold bullion losses (and the risk of inadequate insurance, or the inability to obtain insurance, to cover these risks). Readers should carefully review the Risk Factors section of the continuous disclosure documents of the Company and the Company's technical reports available under its profile on the SEDAR+ website at www.sedarplus.ca for more information on such risks.

Although the Company has attempted to identify important factors that could cause actual results to differ materially, there may be other factors not specifically discussed herein that may cause results to differ materially than anticipated, estimated, described or intended. The Company's forward-looking information is based on the assumptions, beliefs, expectations and opinions of management as of the date of posting on the presentation, and other than as required by applicable securities laws, the Company does not assume any obligation to update forward-looking information if circumstances or management's assumptions, beliefs, expectations or opinions should change, or changes in any other events affecting such statements or information. For the reasons set forth above, investors should not place undue reliance on forward-looking information.

A Measured or Indicated Mineral Resource is that part of a mineral resource for which quantity, grade or quality, densities, shape and physical characteristics are estimated with sufficient confidence to allow the application of Modifying Factors in sufficient detail to support mine planning and evaluation of the economic viability of the deposit. An Inferred Mineral Resource is that part of a mineral resource for which quantity and grade or quality are estimated on the basis of limited geological evidence and sampling. Geological evidence is sufficient to imply but not verify geological and grade or quality continuity. Readers should not assume that all or any part of an Inferred Mineral Resource will be upgraded to Indicated or Measured Mineral Resources. Mineral Resources are not Mineral Reserves and do not have demonstrated economic viability.

Cautionary Statement to U.S. Readers. This presentation uses the terms "Mineral Resource", "Indicated Mineral Resource" and "Inferred Mineral Resource" as defined in the CIM Standards in accordance with NI 43-101. While these terms are recognized and required by the Canadian Securities Administrators in accordance with Canadian securities laws, they may not be recognized by the United States Securities and Exchange Commission. The Mineral Resource estimates and related information in this presentation may not be comparable to similar information made public by U.S. companies subject to the reporting and disclosure requirements under the United States federal securities laws and the rules and regulations thereunder.

International Financial Reporting Standards (IFRS), as issued by the International Accounting Standards Board, are recognized standards for financial reporting in Canada and most jurisdictions. The Company provides certain non-IFRS performance figures, including all-in-sustaining-costs ("AISC"), based on guidance issued by the World Gold Council. These non-IFRS measures are intended to provide additional information to evaluate the underlying performance of a project and should not be considered in isolation or as a substitute for measures of performance prepared in accordance with IFRS. These measures do not have any standardized meaning prescribed under IFRS and therefore may not be comparable with other issuers.

The Company's measured and indicated resources estimates were prepared in accordance with NI 43-101 by Marc Jutras, P. Eng.; MA Sc. with an effective date of February 3, 2021. Mr. Jutras is a Qualified Person under NI 43-101 and is a consultant who is independent of the Company. The Mineral Reserve estimates were prepared by Marc Schulte, P.Eng. (who is also the independent Qualified Person for these Mineral Reserve estimates), reported using the 2014 CIM Definition Standards, and have an effective date of March 31, 2021.

Peter Mah, P.Eng, an Officer, President and CEO and Julian Manco, MSc. P.Geo, Director, Exploration with the Company, are both qualified persons as defined under National Instrument 43-101. Mr. Mah and Mr. Manco have reviewed and approved the technical information presented herein.

Spanish Mountain Gold - Large Resource in the Cariboo Gold District

Fast-Tracking to a Build Decision in 2027

Project Location Near Infrastructure

Favorable Tier 1 Jurisdiction – Cariboo Gold Corridor

- Low risk mining jurisdiction
- Long standing community relationships and support
- Regional resource sector growth
 - Osisko Development's Cariboo Gold Project permit approvals towards construction and operations
- Proximal to operating mines: Gibraltar & Mount Polley Mines

Year-Round Access (lower exploration and development costs)

- Paved highway within 6km of the Project connected to existing gravel roads on site
- Nearby service, skilled workforce and supply centers
 - 6km from Likely
 - 70km from Williams Lake

New Power Line Advancing – 230kV / 60 MW supply

- Low cost, renewable grid power
- New power transmission line advanced to Stage 2 of the System Impact Study for the B.C. Hydro power connection process commenced Q1 2025, refer to the Appendix
- Upsized power supply targets electrification of mining and expanded gold production

Large Resource in the Cariboo Gold District

Deposit	Tonnage	Au Grade	Contained Au (M&I)
SMG Project ¹	294.1 Mt	0.50 g/t	4.7 Moz
Cariboo Gold Project ²	14.7 Mt	3.3 g/t	1.6 Moz
Frasergold ³	15.2 Mt	0.78 g/t	0.4 Moz

Notes: Source of information for (1) Spanish Mountain Gold (2021 PFS); (2) Osisko Development (2022 FS); (3) Eureka (2015 MRE)



Why Invest?

- ✓ Fast-track¹ to a Build Decision by 2027
 - ✓ Confidence ~226,500 m of Drilling
 - ✓ Targeting Robust Cashflow



GOLD LEVERAGE

Favourable gold price
No streams

FUNDAMENTAL VALUE

Rerate potential

HIGH GRADE GROWTH

Mineral endowment open
in all directions²
2025 diamond drilling
underway

SUSTAINABILITY EXCELLENCE

Lowering carbon intensity
Minimizing Effects to the
Environment and Community
Pride in a Positive Legacy

NEW VISION

PEA AND MRE³ | H1/25

Notes: (1) See Appendix for excerpt from BC Government's comment on their list of 18 provincial projects they will be advancing (page 25) ; (2) Refer to appendix for property size and claim boundary; (3) Forward-Looking Information - Updated Preliminary Economic Assessment (PEA) including a new Mineral Resource Estimate (MRE) are expected to be released within the first half of 2025. These statements are considered Forward-Looking and are subject to change when the PEA is published, and through ongoing work as the Company advances the project through various design phases.

Board & Management Team

Highly experienced team with decades of innovative mining, exploration, development & operational expertise



Brent Bergeron
Chair & Director, M.A. (Economics)



Lembit Janes
Director, MBA



Richard Oraziotti
Director, MBA, CPA, BBA



Garnet Dawson
Director, B.Sc., M.Sc., P.Geo



Christopher Lattanzi
Director, P.Eng



Peter Mah
CEO & Director, B.A.Sc., M.A.Sc



Mark Ruus
CFO, CPA-CA



Julian Manco
Director Exploration, M.Sc., P.Geo

Capital Structure Overview

Equity Composition and Cash

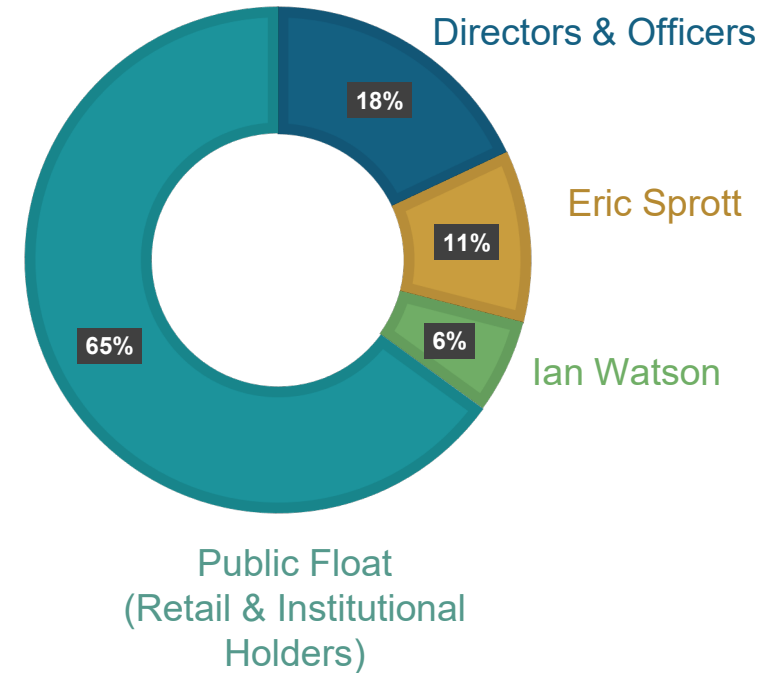
Cash CDN (Sept 30, 2024)	\$ 1.1 M*
Equity Financing (Nov 15, 2024)	\$ 8.3 M*
Market Cap (Mar 14, 2025)	\$ 62.3 M

*Cash balance as at September 30, 2024 – Note that on 15Nov24, the Company closed a PP financing for gross proceeds of \$8.3M

Capital Structure	
Shares Issued	444,742,340
Warrants (\$0.25/ \$0.23/ \$0.18/ \$0.135 exercise price)	70,110,708
Options	7,487,500
Fully Diluted	522,340,588

Notes: As at February 20, 2025

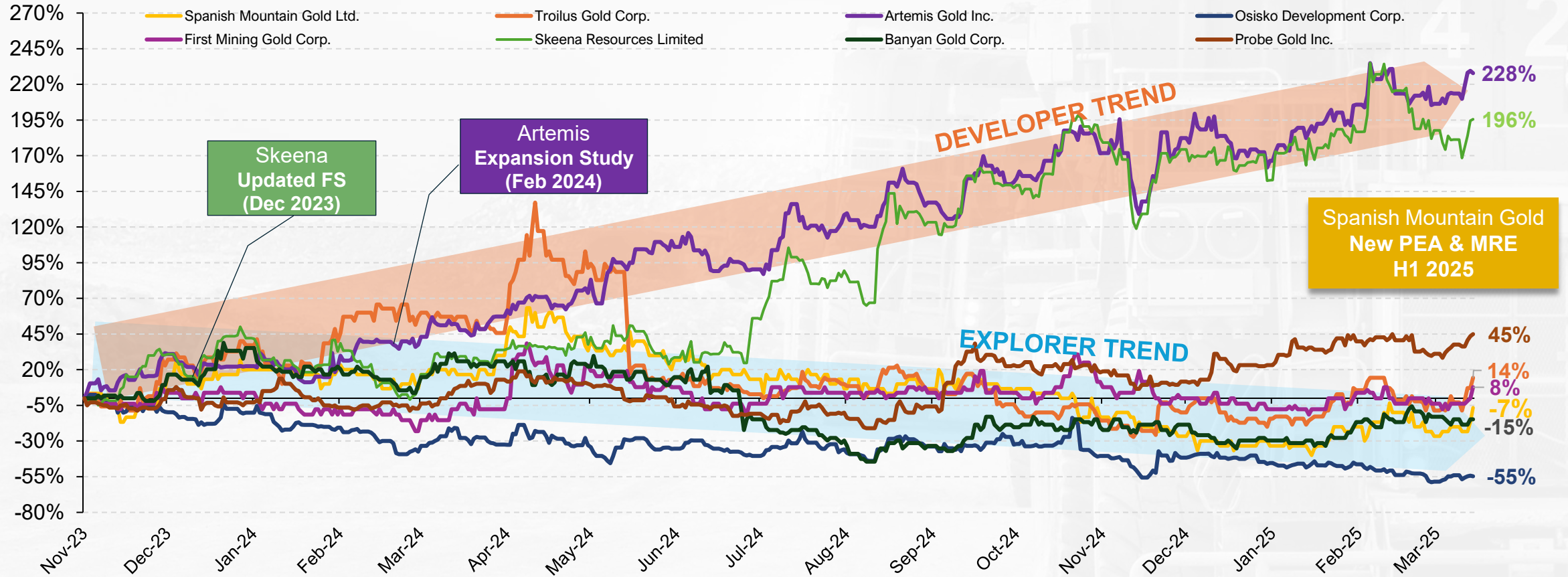
SHAREHOLDERS*



Notes: As at February 20, 2025 (undiluted basis)

Breakout Time Approaching

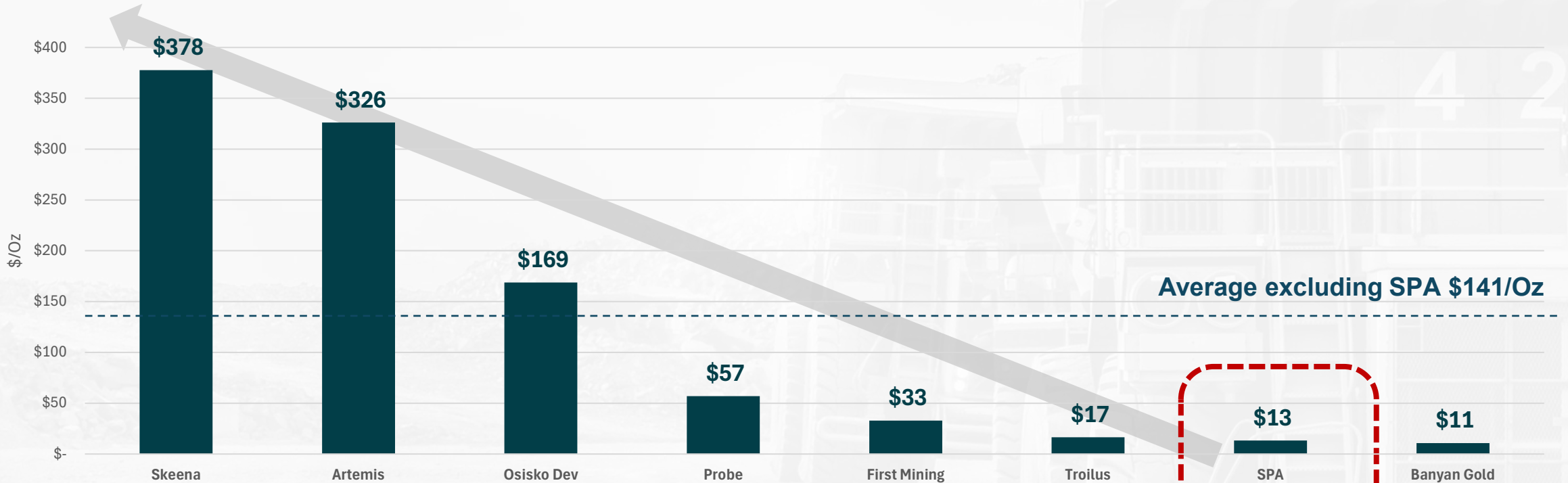
...Transitioning to a Developer



Note: Share Price Performance Nov 2023 – Mar 2025 (Source: S&P Capital IQ)

Accelerated Transition to Developer

Value per M&I Resources (\$/Oz)¹














Project Stage	Commissioning	Construction	Development	Resource	Development	Development	Resource	Resource
Mkt Cap (\$M) ²	\$ 1,654	\$ 3,808	\$ 265	\$ 364	\$ 151	\$ 153	\$ 62	\$ 76
M&I	4.4 ³	11.7	1.6	6.4 ³	4.6 ³	9.2	4.7	7.0 ⁴



Notes: (1) Refer to Appendix for further information; (2) Market Capitalization as of March 14, 2025, (source tmxmoney.com, except for SPA which was calculated internally); (3) Skeena (Eskey Project); Probe (Novador Project), First Mining (Springpole Project); (4) Banyan inferred resources only; Numbers may be affected due to rounding.

2025 Plan and Catalysts

2025

Mineral Resource & Exploration Drill Program	H1	H2
✓ 2024 Drill Program completed	COMPLETED – ALL ASSAYS RELEASED IN 2024	
➤ 2025 Drill Program (Commenced Feb 10)		
➤ NEW Mineral Resource Estimate ¹		
Project Enhancements		
➤ Whittle NPV Optimization substantially complete		
➤ NEW Tailings, Waste & Water Management Designs		
➤ NEW Preliminary Economic Assessment (PEA) ¹		
➤ Decision to Advance to PFS or Fast-Track to FS		
Infrastructure		
➤ Commenced Stage 2 of SIS with BC Hydro New 230 kVa 60 MW Power Supply		
Environment		
➤ Baseline ongoing		
➤ EA and Permitting	Hold	 Restart early works

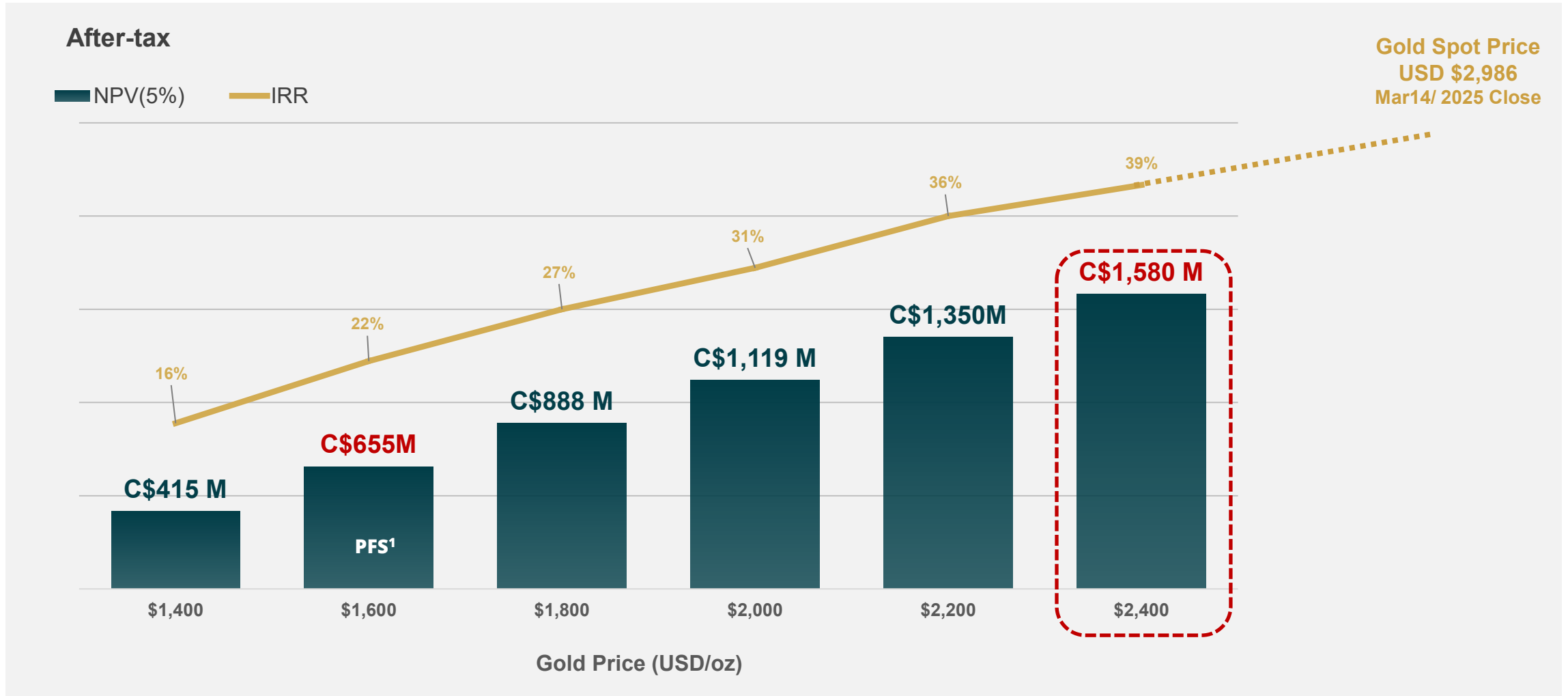
OPTIMIZING NPV, DERISKING, LOWERING CARBON INTENSITY & UPLIFTING CORPORATE SOCIAL RESPONSIBILITY



Notes: (1) NI 43-101 combined Mineral Resource Estimate and Preliminary Economic Analysis Technical Report to be published no later than 45 days after announcing the results of the new PEA;

Leveraged to Rising Gold Price Environment

Robust IRR Through Gold Price Ranges



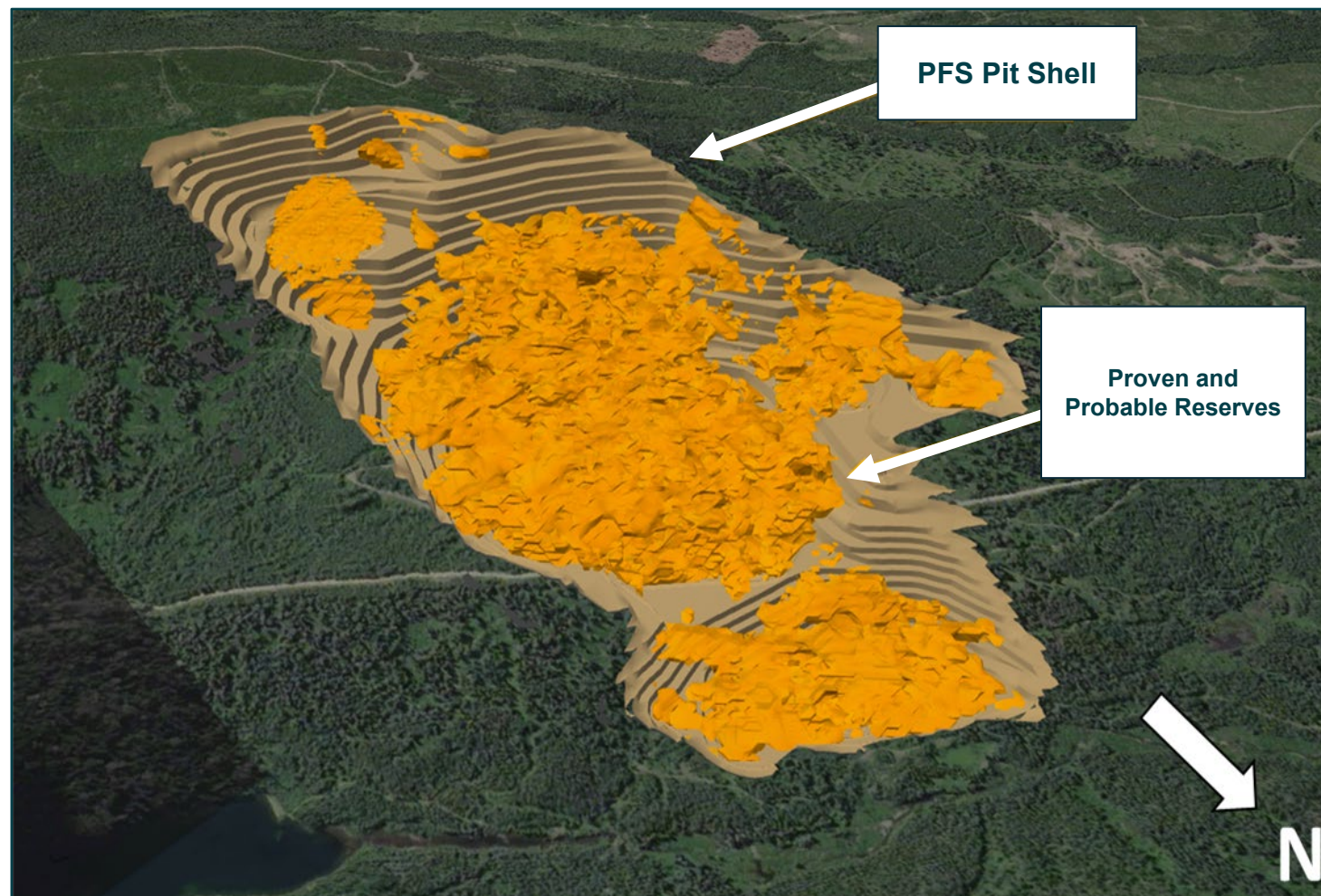
Notes: (1) Base case after-tax NPV5% of \$655M and IRR 22%, and payback period of 3.3 years – For more details on Project Economics refer to Spanish Gold Project – Prefeasibility Study NI 43-101 Technical Report, effective date May 10, 2021, filed on SEDAR+ and on the Company's website. (2) Kitco.com – Spot Price as at close on Mar 14, 2025

Maximize Project NPV and Scale via the Whittle Enterprise Optimization

2021 Pre-Feasibility Study Highlights

NPV_{5%} — Pre-tax — After-tax	C\$ millions	\$848 \$655
IRR — Pre-tax — After-tax	%	25% 22%
Payback — Pre-tax — After-tax	Years	3.2 3.3
Avg Annual Cash flows (life of mine)	C\$ millions	\$128
Gold Price Assumption	US\$	\$1,600
Mine Life	Years	14
Strip Ratio	Waste/ Resource	4 : 1
Throughput	Tpd	20,000
Avg Annual Gold Production	koz	150
Initial Capex	C\$ millions	\$607
AISC Life of Mine (LOM)	\$/ Au oz	\$801
Project Profit Margin LOM (Pre-tax, post CAPEX)	%	33%

The Whittle Enterprise Optimization is substantially complete and will guide the PEA mine plan assumptions



New PEA Anticipated Improvements and Derisking

2021 PFS*

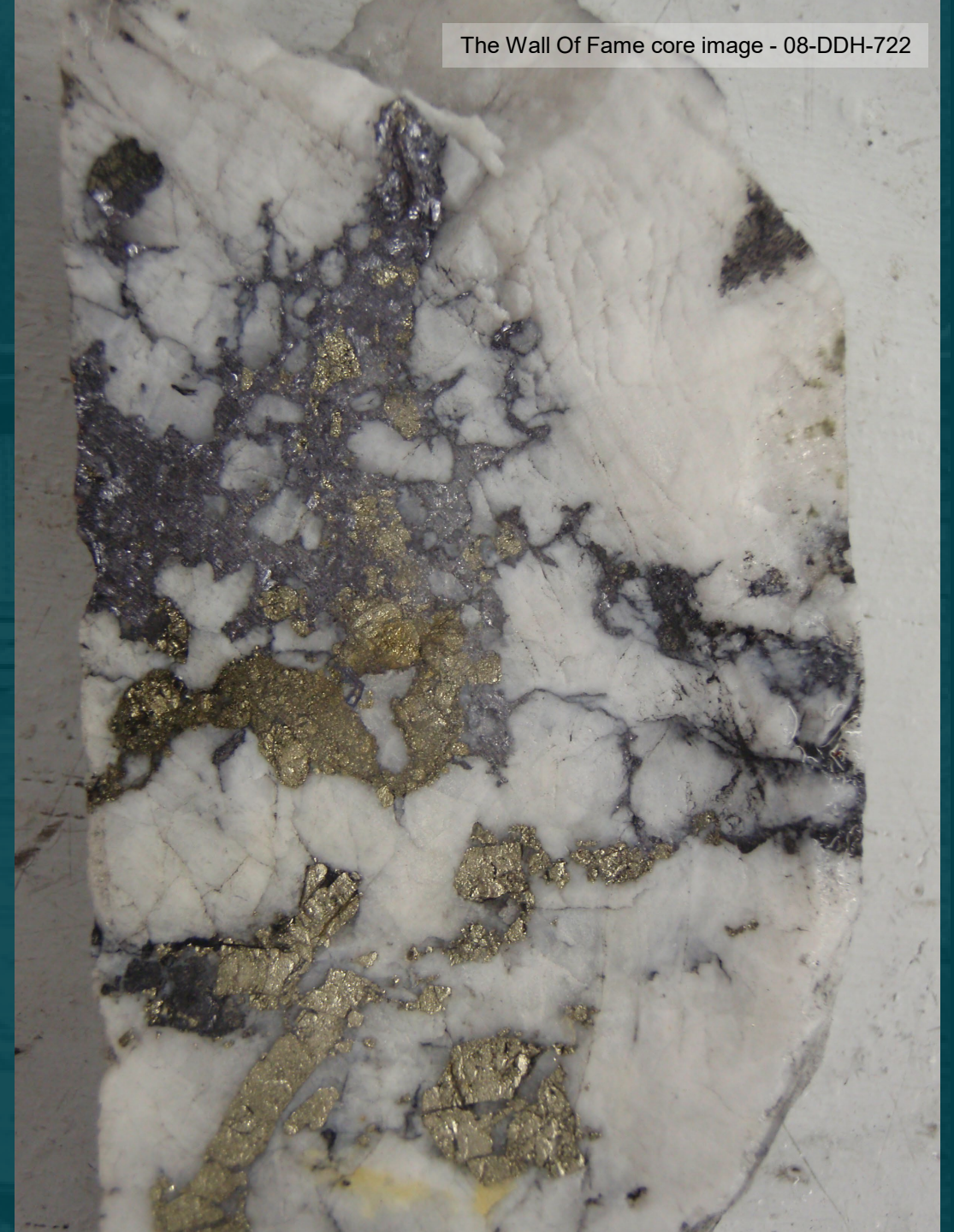
2025 New PEA Targets

SCALE	20 ktpd	✓ Assessing Range of 20ktpd – 50ktpd
PIT SELECTION	Sub-optimal Pit Selected	✓ Larger Optimized Pit
MINING	Diesel	✓ Electrification (mine fleet and equipment)
PROCESSING	Conventional Flotation with Gravity	✓ Coarse Ore Flotation with Gravity
WASTE ROCK MANAGEMENT	Moderate Strip Ratio	✓ Lower Strip Ratio
WATER MANAGEMENT	Large Volumes in Valley	✓ New Location would be ‘High & Dry’
GEOTECHNICAL	Valley Less Suitable for TMF (high water run-off) Pit Slope Angle Approximations Higher Risk	✓ New Location (TMF requires less water) ✓ Improved Pit Slope Design ✓ Lower Risk
TAILINGS MANAGEMENT FACILITY (TMF)	Conventional Slurry Containment Higher Risk	✓ Cleaner Coarse Gangue Rejection from Coarse Ore Flotation ✓ Free Draining vs Filtered Tails ✓ Lower Risk
POWER	30 MW	✓ Upsized to 60 MW
CARBON INTENSITY	High	✓ Lower
PERMIT & EXECUTION	Higher risk	✓ Lower risk

Note: (1) For detailed information on the 2021 PFS, refer to the Spanish Mountain Gold Project - Prefeasibility Study and Mineral Resource Estimate, and associated NI 43-101 Technical Report, effective date May 10, 2023, available on the Company's website or under the Company's profile on [Sedarplus.ca](https://www.sedarplus.ca).
(2) 2025 New PEA Targets and Benefits are considered Forward-Looking Information and are subject to change when the PEA is published, and through ongoing work as the Company advances the project through various design phases. Refer to Appendix for more detail on targeted improvements.

Exploration Value & Growth Through the Drill Bit

- ✓ **Grow Endowment & Future Value Preservation**
- ✓ **High-Grade Gold Discovery**
- ✓ **Project Valuation Upside**



Growth: 2025 Drill Program Targets & Objectives: Plan View

Going for high grade gold mineralization extensions near the 2021 Resource Pit

Targets & Objectives:



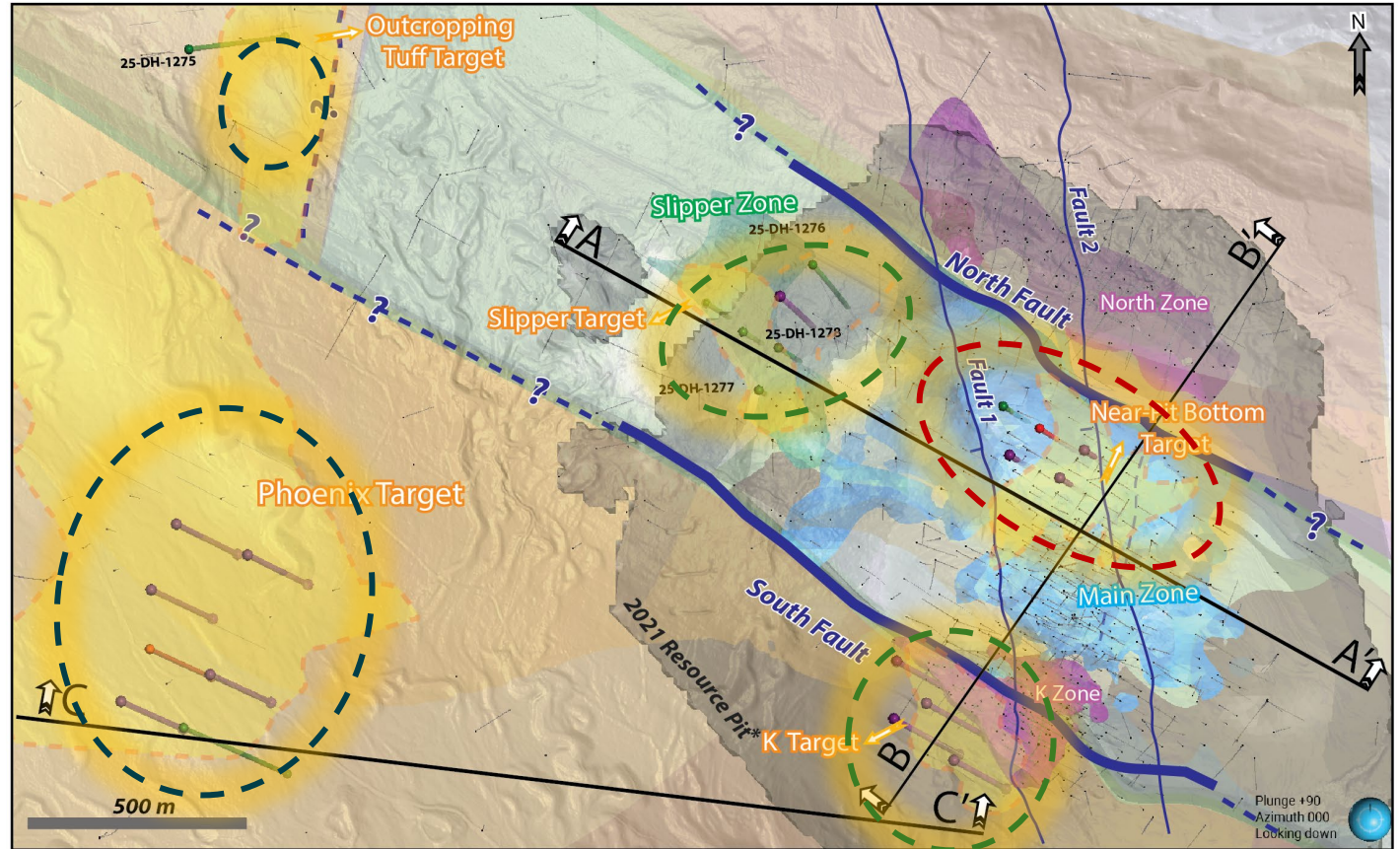
Extend near-surface mineralization along strike with low potential strip ratios
 ➤ **Slipper Target, K Target**



Test deeper high-grade intercepts discovered in the 2024 Drill Program
 (refer to press release dated Dec 18, 2024, "SPA Intercepts Continuous Mineralization")
 ➤ **High-Grade Zone Target, Near-Pit Bottom Target with potential for open pit and underground mining**



Endowment growth and informing the project footprint
 ➤ **Phoenix Target, Outcropping Tuff Target**



Simplified Geology

Volcanic Tuff	Argillite
Greywacke	Undefined Siltstone

Drill holes - Completed
Drill holes - In Progress
Drill holes - Pending
Drill holes - Historic



*2021 Resource Pit (Constrained to Spanish Creek buffer - Refer to Mineral Resource NI 43-101 Technical Report, effective date May 2021)

Note: Plan view. Pending drill holes are subject to change as the drill program advances.

2025 Drill Targets: Long Section View

Long Section - View Looking Northeast

Slipper Zone Target

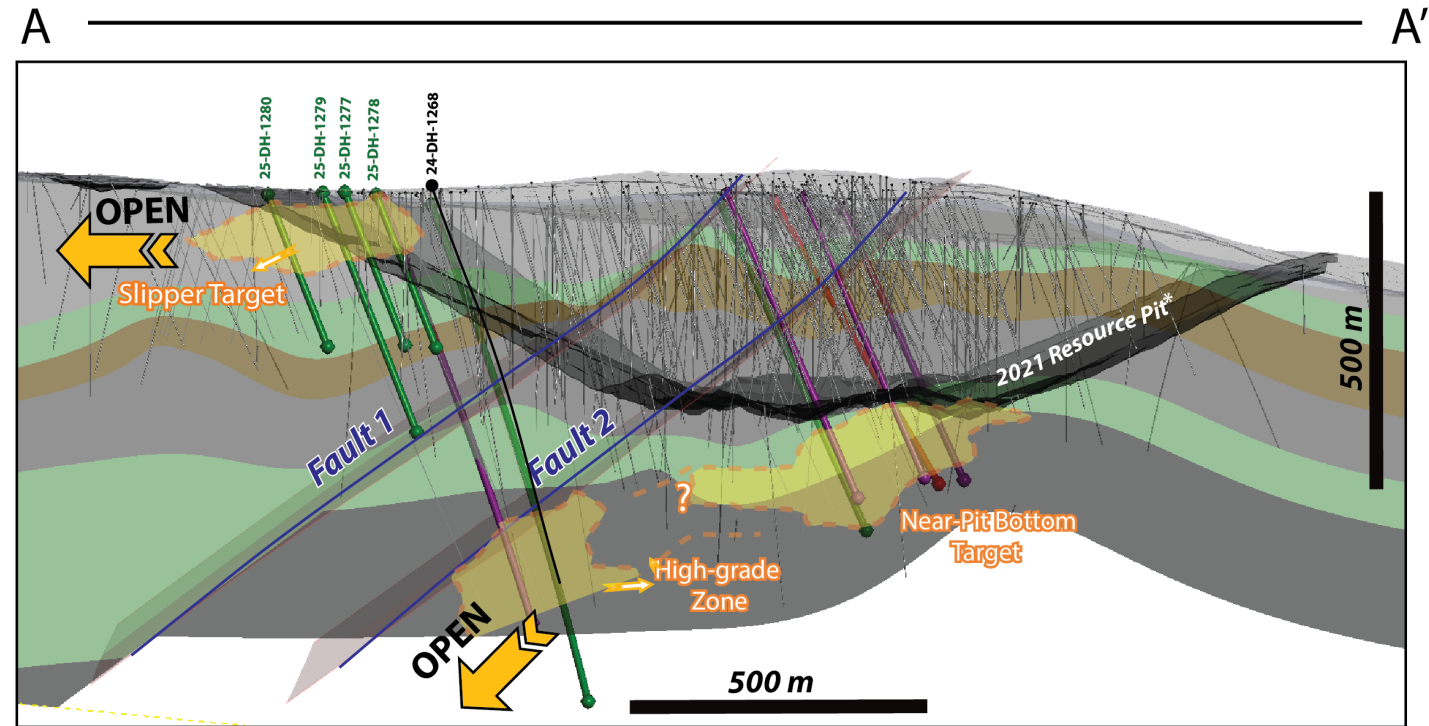
- Testing near-surface extensions of this zone with potential for low waste strip ratio open pit mining

Deeper High-Grade Zone Target

- Follow-up on high-grade intercepts encountered in 24-DH-1268¹ with potential to extend near pit mineralization
- Test depth extents of high-grade mineralization relative to its potential for underground mining

Near-Pit Bottom Target

- Potential for resource expansion given proximity to the *2021 Resource Pit



Simplified Geology		● Drill holes - Completed	
■ Volcanic Tuff	■ Argillite	● Drill holes - In Progress	
■ Greywacke	■ Undefined Siltstone	● Drill holes - Pending	
		● Drill holes - Historic	
<small>*2021 Resource Pit (Constrained to Spanish Creek buffer - Refer to Mineral Resource NI 43-101 Technical Report, effective date May 2021)</small>			

Note: Pending drill holes are subject to change as the drill program advances.

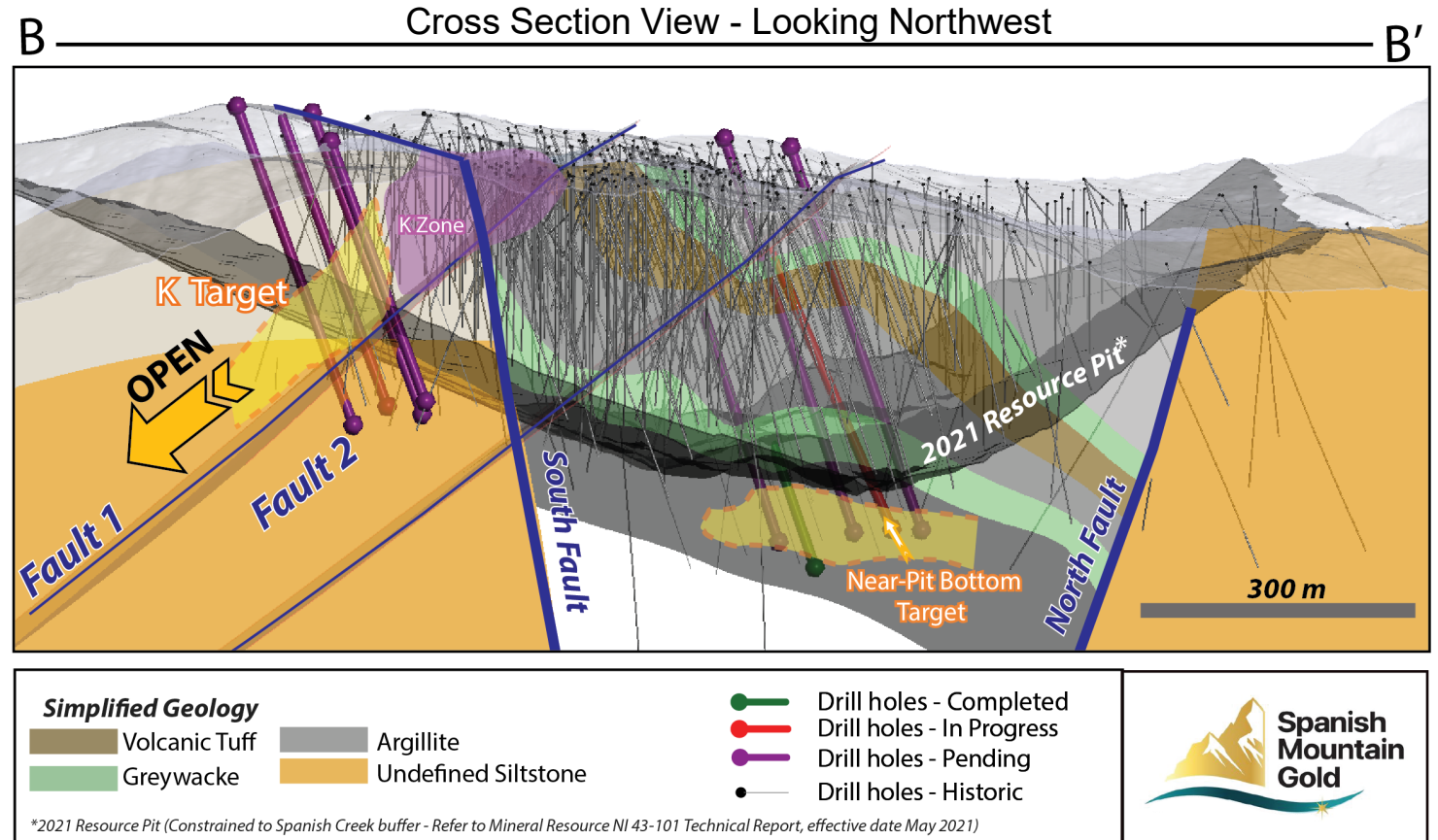
2025 K-Zone and Deeper Pit Drill Targets: Cross Section View

K Zone Target

- Testing near-surface extensions of this zone with potential for lowering open pit mining waste strip ratio
- Lack of drill information. Test the potential southwest continuity of the K-Zone mineralization along Fault 1 open at depth

Near-Pit Bottom Target

- Test the mineralization control identified between the new Third Argillite high-grade zone and the Lower Greywacke contact



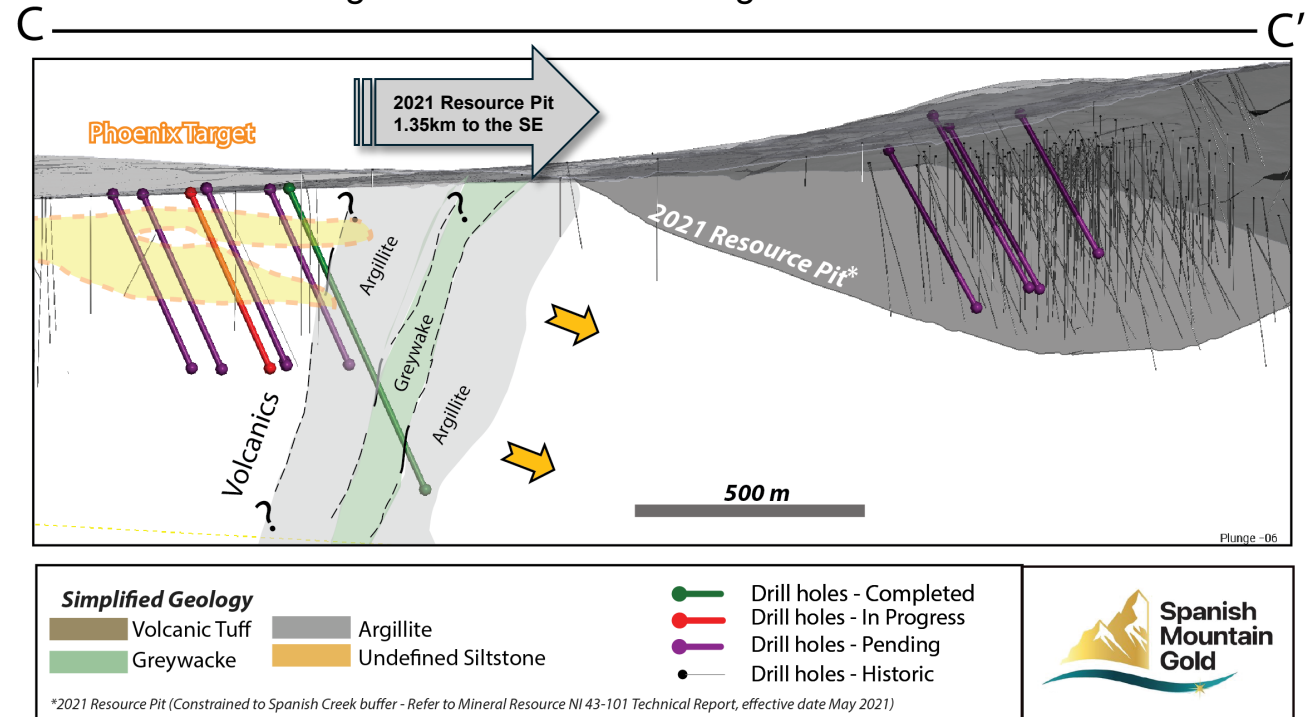
Note: Pending drill holes are subject to change as the drill program advances.

2025 Phoenix Drill Target: Long Section View

Phoenix Target

- Previously identified by historical drilling that encountered significant gold intercepts associated with quartz veining and several holes ending in mineralization (refer to press release dated Dec 7, 2011, “SPA Announces Discovery of New Gold Zone”)
- A new preliminary internal geological model containing Phoenix was developed as part of the 2024 core relogging campaign, identifying a large volume of potential gold mineralization over approx. 1.7km wide by 350 m long by 100 m thick
- Due to high-grade intersections and a sizeable potential near-surface mineralized gold endowment volume, follow-up drilling will determine the extents of potential gold mineralization for open pit mining and its impact on the overall project footprint
- Current exploration in the Phoenix Target has revealed the presence of argillite units, including some cataclastic horizons. Notably, this sequence is subvertical and dipping in the opposite direction to the sequence in the main pit.

Long Section View - Looking North-Northeast



Note: Pending drill holes are subject to change as the drill program advances.

Spanish Mountain Gold Highlights

Build Decision in 2027

NEW VISION

BUILD THE NEXT
GOLD MINE IN BC'S
CARIBOO DISTRICT

STRATEGY

STAGED
PRODUCTION
→ EXPAND
HIGH GRADE
SCALE

PLAN

NEW MRE & PEA
FAST TRACK TO A
BUILD DECISION

CATALYSTS

- ✓ MRE
- ✓ PEA
- ✓ 2025 DRILLING
- ✓ PFS/FS DECISION

LOOK-AHEAD

TARGETING AN
EXECUTABLE BUILD
DECISION BY 2027

Appendix



TSX-V: **SPA** | OTCQB: **SPAUF** | FSE: **S3Y**

Corporate Social Responsibility

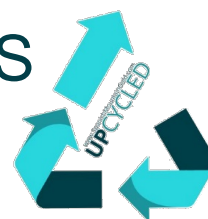
Uplifting Operating Practices & Mining Industry Standards



UPCYCLED DRILL CORE SAMPLE CRATES

Going Beyond the TRIPLE BOTTOM LINE

(Safety, Health & Environment, Community Involvement, and Cost Savings)



Process & End Products – 2024 to 2025 Exploration Program

- Removed trees that were potential fire hazards
- Local contractor milled trees for usable dimensional lumber
- Site team built fit-for-purpose sample crates
- Faster turnaround and better quality

IMPACT:

- **54% Cost Savings**
- **Environmental Savings & Sustainability**
- **Social Win – Seek to replicate innovation in other areas**



UTILIZATION OF RENEWABLE DIESEL

2024 Exploration Diamond Drill Program Fueled by Renewable Diesel (Drills and Support Equipment)

Achieved a 72% emission reduction or a 63,653 kg decrease of CO₂e (carbon dioxide equivalent)



New PEA Anticipated Improvement Brackets

Project Scale | Pit Selection | Mining | Processing



METSO High Pressure Grinding Rolls



SCALE

20 ktpd **VS** 20-50 ktpd

NEW OPTIMAL PIT

Sub-Optimal Pit Selected **VS** Larger Optimized Pit with Lower Strip

ELECTRIFICATION

Diesel **VS** Electrification

GOLD PRODUCED

Conventional Flotation + Gravity **VS** Coarse Ore Flotation + Gravity

TARGETED BENEFITS

Project Scale

Larger scale expected to provide greater efficiency, lower costs and NPV uplift

Assessments on a range of throughputs from 20ktpd up to +50ktpd is underway

Pit Selection

Pit selection optimized larger pit; detailed mine plan options underway

Targeting lower strip ratio through geotechnical and stockpile management

Mining

Electrification expected to increase productivity with lower carbon intensity

Upsized power to 60 MW - supports the up-sized mine fleet and equipment for larger production rates

Processing

Improved gold production at lower capex, power and operating costs

Coarse ore flotation reduces power needs while reducing risks associated with the TMF solutions

PEA TARGET

TSX-V: SPA | OTCQB: SPAUF | FSE: S3Y

Note: (1) For detailed information on the 2021 PFS, refer to the Spanish Mountain Gold Project - Prefeasibility Study and Mineral Resource Estimate, and associated NI 43-101 Technical Report, effective date May 10, 2023, available on the Company's website or under the Company's profile on [Sedarplus.ca](https://www.sedarplus.ca); (2) 2025 New PEA Targets and Benefits are considered Forward-Looking Information and are subject to change when the PEA is published, and through ongoing work as the Company advances the project through various design phases (3) Strip ratio as waste tonnes mined divided by ore tonnes (refer to 2021 PFS)

New PEA Anticipated Improvement Brackets

Waste Rock & Water Management | Geotechnical & Tailings Management Facility (TMF)



Canadian Malartic Mine

2021 PFS*

2025 New PEA Targets

STRIP RATIO

Moderate Strip Ratio **VS** Lower Strip Ratio

WATER WAYS

Large Volumes in Valley **VS** High & Dry

TMF LOCATION

Valley Location is Higher Risk **VS** New Location is Lower Risk

INDUSTRY LEADING

Conventional Slurry Containment **VS** Free Draining & Filtered Tails

TARGETED BENEFITS

Waste Rock Management

Enhance sustainability by utilizing mine waste for tailings. Assessing co-mingled waste with tails

Less cost to move waste to mine ore. Reduces need to purchase aggregate while beneficially utilizing waste material

Water Management

Lower volumes to minimize treatment requirements, reduce risk and lower closure costs; use gravity

Targeting innovation towards zero discharge

Geotechnical

Lower safety, environment and geotechnical risk with new location, shorten distance to plant

Avoids placing infrastructure in valley bottom and water catchment

TMF

Coarser tails product benefits to the TMF new location avoids borrow-pit starter dyke costs

More flexible placement that helps lower mineral endowment sterilization risks and closer to mill

PEA TARGET

Note: (1) For detailed information on the 2021 PFS, refer to Refer to the Spanish Mountain Gold Project - Prefeasibility Study and Mineral Resource Estimate, and associated NI 43-101 Technical Report, effective date May 10, 2023, available on the Company's website or under the Company's profile on [Sedarplus.ca](https://www.sedarplus.ca); (2) 2025 New PEA Targets and Benefits are considered Forward-Looking Information and are subject to change when the PEA is published, and through ongoing work as the Company advances the project through various design phases (3) Strip ratio as waste tonnes mined divided by ore tonnes (refer to 2021 PFS)

New PEA Anticipated Improvement Brackets

Power | Carbon Intensity



Site C Hydroelectric Dam



INFRASTRUCTURE



SUSTAINABILITY



TARGETED BENEFITS

New Power Line

Low-cost renewable energy to replace diesel/
Potential for renewable diesel

Commence Stage 2 of SIS with BC Hydro Q1 2025; ANDRITZ study optimizes comminution energy

Carbon Intensity

Significantly lower carbon footprint with electrification and alternative fuel sources

Supports the goal of reducing carbon footprint and greenhouse gas emissions

PEA TARGET

2025 New PEA

- ✓ Executable Business case that is expected to Maximize NPV while Lowering Risk
- ✓ Leverage State-of-the-Art Commercially Available Technology and Innovative Solutions



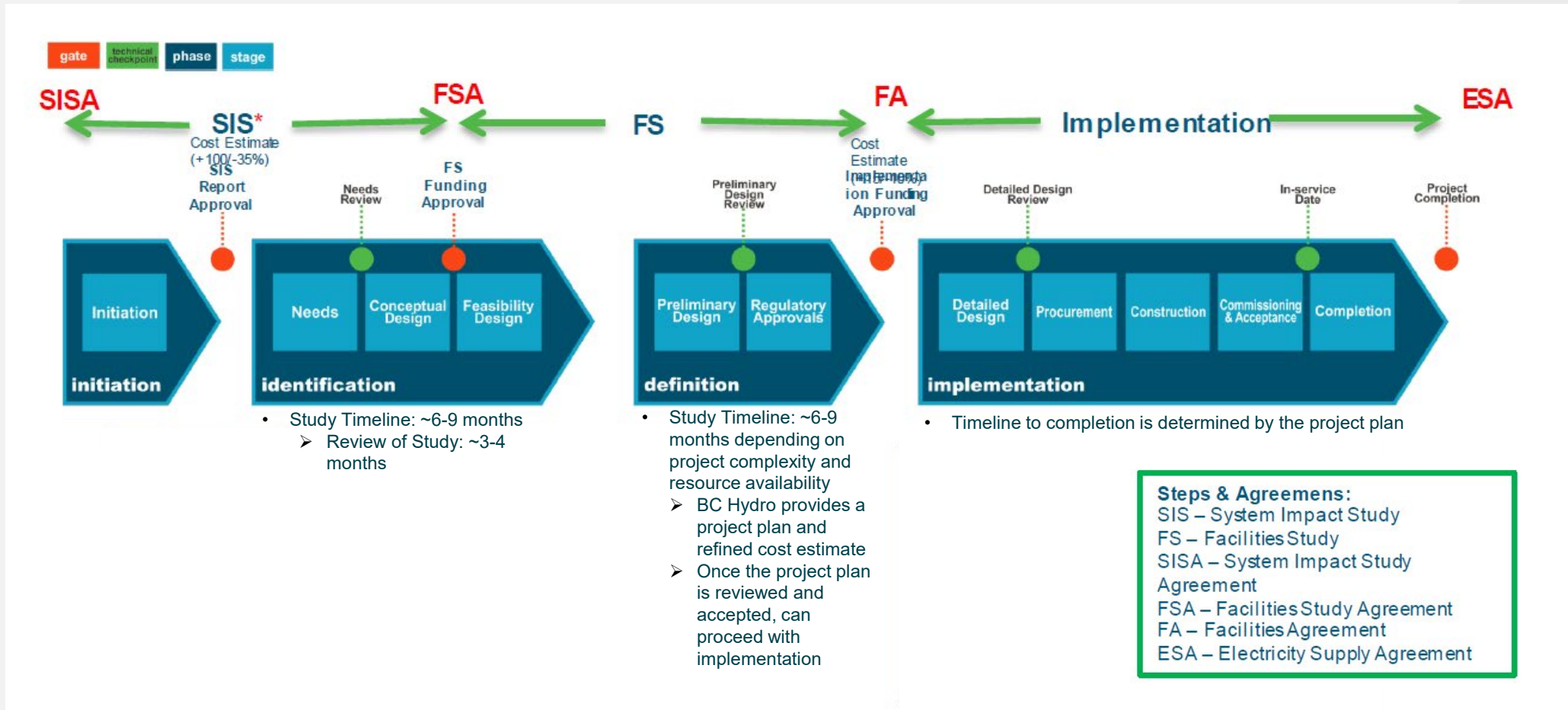
Level of work completed could enable fast-track to Feasibility Study (FS) and an earlier build decision

TSX-V: SPA | OTCQB: SPAUF | FSE: S3Y

Note: (1) For detailed information on the 2021 PFS, refer to the Spanish Mountain Gold Project - Prefeasibility Study and Mineral Resource Estimate, and associated NI 43-101 Technical Report, effective date May 10, 2023, available on the Company's website or under the Company's profile on Sedarplus.ca; (2) 2025 New PEA Targets and Benefits are considered Forward-Looking Information and are subject to change when the PEA is published, and through ongoing work as the Company advances the project through various design phases (3) Strip ratio as waste tonnes mined divided by ore tonnes (refer to 2021 PFS)

BC Hydro Power Connection Process¹

Advancing to Stage 2 of the SIS with [BC Hydro](#), the first step in the Transmission Load Interconnection Process for a proposed 230 kilovolt (kV), 60-mega-watt (MW) renewable hydroelectric power substation and a 75-kilometre transmission line to the SMG Project.



BC Fast-Tracking Initial List of 18 Resource Projects

BC Premier David Eby's office fast-tracking resource projects in-order-to reduce its reliance on trade with the United States.



The Office of the Premier says in a statement that combined, the projects are worth approximately \$20 billion and will employ 8,000 people across the province. Eby previously said the focus is on resource-based communities where the threat of U.S.-imposed tariffs on Canadian exports is likely to hurt the most.

February 5, 2025

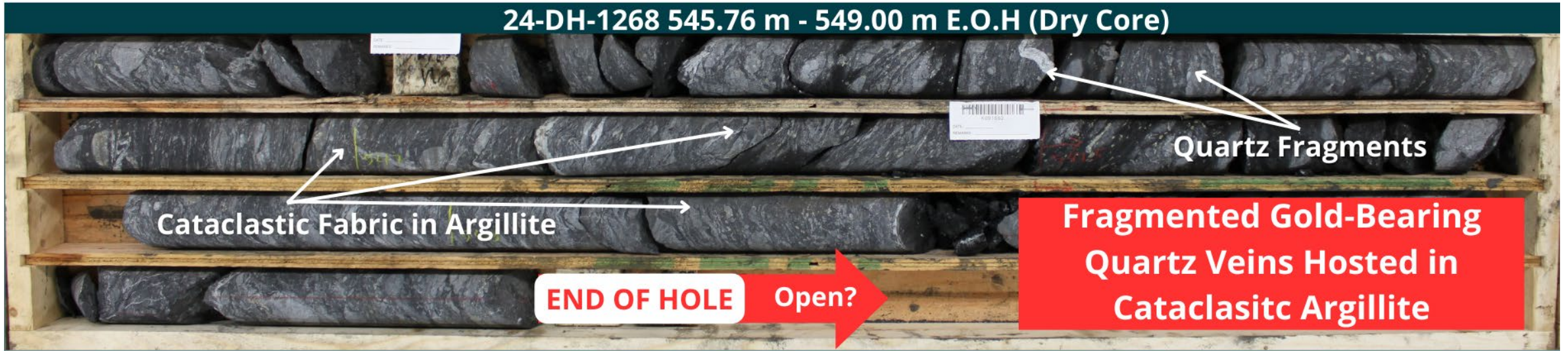


We know that we have what the world needs, and we're going to use that to our advantage.

- Premier David Eby



High Grade Example DH-1268 End Of Hole Mineralization (2024 Drill Program) – Open Pit and Underground Mining Potential



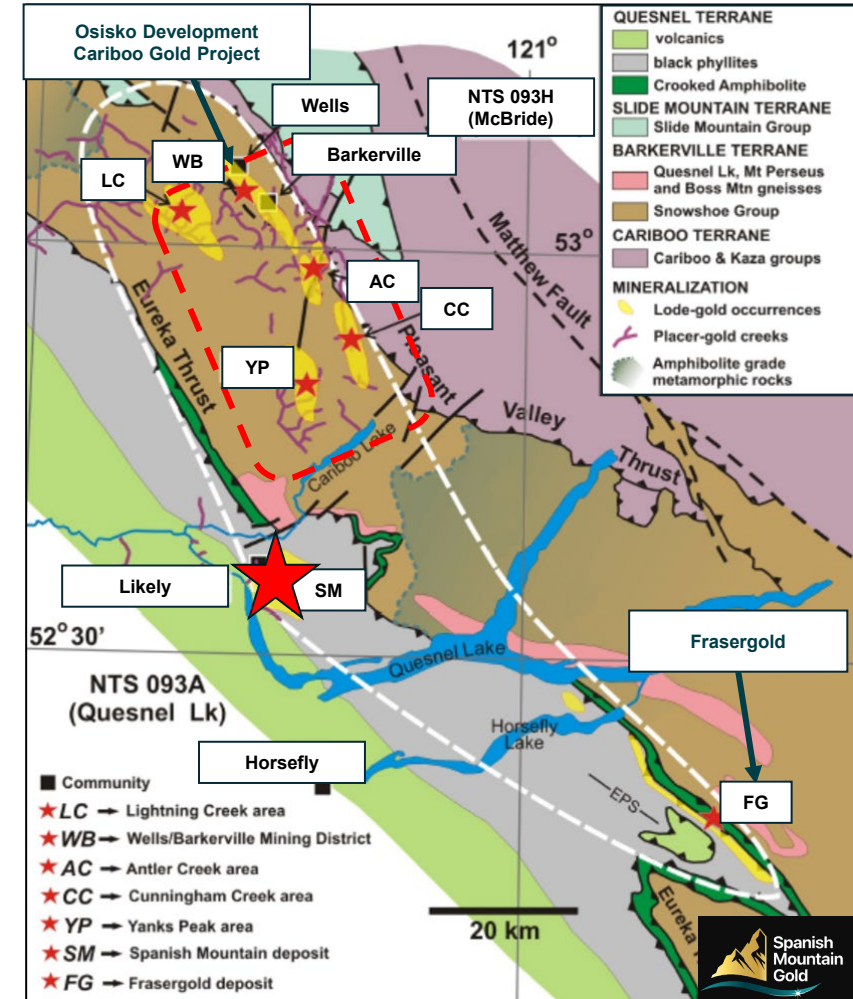
Notes: Refer to press releases December 18, 2024 (Spanish Mountain Gold Intercepts Continuous Mineralization).

Largest Resource in the Cariboo Gold Corridor

- The SMG Project has the largest resource located within a Cariboo Gold Corridor with total length of approximately 100km
- Encompasses gold deposits in the Quesnel and Barkerville Terranes
- Placer and lode gold occurrences

Deposit	Tonnage	Au Grade	Contained Au (M&I)
SMG Project ¹	294.1 Mt	0.50 g/t	4.7 Moz
Cariboo Gold Project ²	14.7 Mt	3.3 g/t	1.6 Moz
Frasergold ³	15.2 Mt	0.78 g/t	0.4 Moz

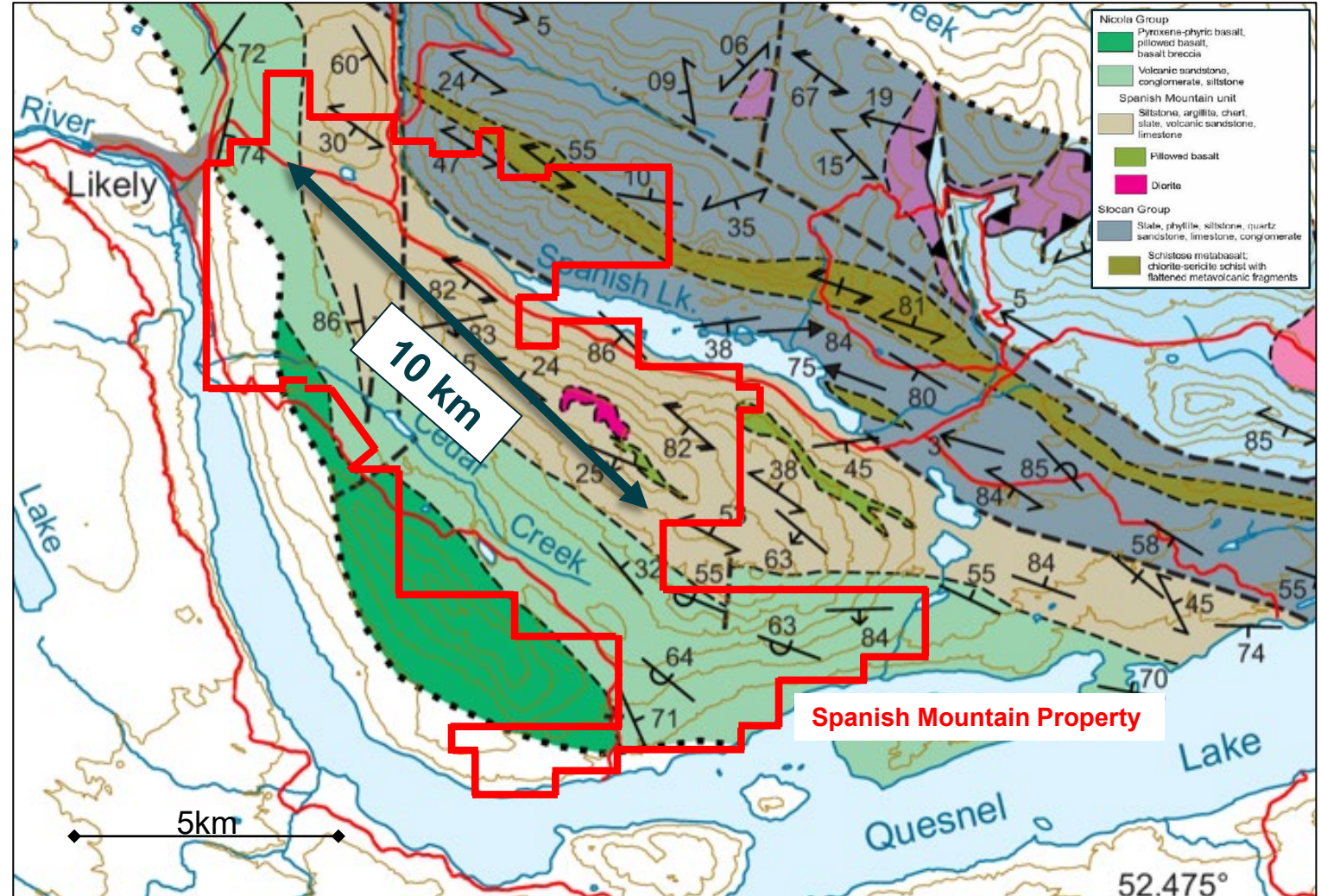
Notes: Source of information for (1) Spanish Mountain Gold (2021 PFS); (2) Osisko Development (2022 FS); (3) Eureka (2015 MRE)



Property size over 10,000 Hectares

100% SMG Owned Mineral Claims

- Deposit measures approximately 1,800x800m
- Prospective argillite units of the Nicola Group cover a strike length of over 10km
- Potential for critical metals includes the Cedar Creek and Nina Lake polymetallic deposits (not shown)



Mineral Reserve & Resource Estimate¹

The Project's Mineral Reserves, a subset of the M&I Mineral Resources, are based on the PFS mine plan and estimated according to CIM 2019 Best Practices and 2014 CIM Definition Standards. The PFS includes an updated Mineral Resources estimate based on the pit shell developed with assumed cost parameters and assumptions. The Project's Mineral Resources, including the Mineral Reserves, are as follows:

Reserves					
Mineral Reserves⁽²⁾	Tonnage (Mt)	Gold Grade (g/t)	Gold (Moz)	Silver Grade (g/t)	Silver (Moz)
Proven	40.8	0.79	1.03	0.67	0.88
Probable	55.1	0.74	1.31	0.74	1.30
Total P&P Reserve	95.9	0.76	2.34	0.71	2.18
Resource					
Mineral Resources	Tonnage (Mt)	Gold Grade (g/t)	Gold (Moz)	Silver Grade (g/t)	Silver (Moz)
Measured	69	0.59	1.2	0.67	1.5
Indicated	226	0.47	3.4	0.73	5.3
Total M&I	294	0.50	4.7	0.72	6.8
Inferred	18	0.63	0.4	0.76	0.4

Mineral Reserve & Resource Estimate Notes

Mineral Reserve Estimate Notes

1. The Mineral Reserve estimates were prepared by Marc Schulte, P.Eng. (who is also the independent Qualified Person for these Mineral Reserve estimates), reported using the 2014 CIM Definition Standards, and have an effective date of March 31, 2021.
2. Mineral Reserves are based on the PFS Life of Mine Plan.
3. Mineral Reserves are mined tonnes and grade, the reference point is the mill feed at the primary crusher and includes consideration for operational modifying factors
4. Mineral Reserves are reported at a cut-off grade of 0.3 g/t Au.
5. Cut-off grade assumes US\$1,500/oz. Au and US\$20/oz Ag at a currency exchange rate of 0.76 US\$ per C\$; 99.8% payable gold; 95.0% payable silver; \$5.00/oz Au offsite costs (refining, transport and insurance); a 1.5% NSR royalty; and uses a 91% metallurgical recovery for gold and 25% recovery for silver.
6. The cut-off grade equates to incremental operating costs of \$17/t, which covers process, G&A and site, stockpile reclaim, and sustaining and closure capital costs.
7. Mined tonnes and grade are based on a selective mining unit (SMU) of 15mx15mx5m, including additional estimates for mining loss (3%) and dilution between ore and waste zones (6.6%, 0.24 g/t Au, 0.6 g/t Ag).
8. Factors that may affect the Mineral Reserve estimates include metal prices, changes in interpretations of mineralization geometry and continuity of mineralization zones, geotechnical and hydrogeological assumptions, ability of the mining operation to meet the annual production rate, process plant and mining recoveries, the ability to meet and maintain permitting and environmental license conditions, and the ability to maintain the social license to operate.
9. Numbers have been rounded as required by reporting guidelines.

Mineral Resource Estimate Notes

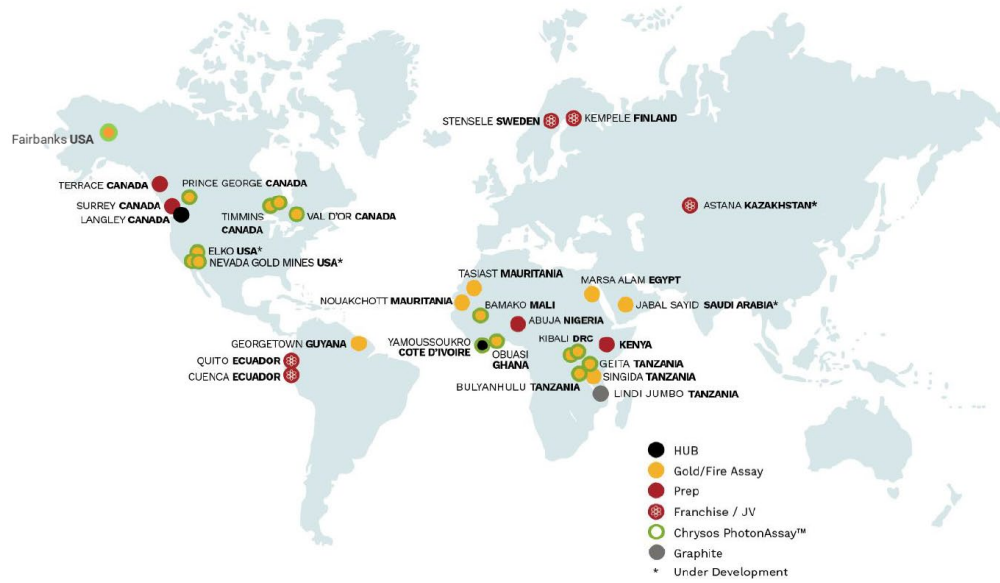
1. The Mineral Resource Estimates were prepared by Marc Jutras, P.Eng.; M.A.Sc. (who is also the independent Qualified Person for these Mineral Resource Estimates), in accordance to the 2014 Canadian Institute of Mining, Metallurgy and Petroleum ("CIM") Definition Standards for Mineral Resources and Mineral Reserves, with an effective date of February 3, 2021.
2. The Mineral Resource Estimates are reported at a cutoff grade of 0.15 g/t Au.
3. Cut-off grade assumes US\$1,600/oz. Au at a currency exchange rate of 0.75 C\$ per US\$; 99.8% payable gold; \$4.00/oz. offsite costs (refining and transport), a 1.5% royalty; and uses a 91% metallurgical recovery for Au and a 25% recovery for Ag. The cut off-grade covers processing costs of \$7.33/t and general and administrative (G&A) costs of \$2.67/t.
4. The Mineral Resources are constrained by an open pit shell generated by applying the Lerchs-Grossman algorithm to the Spanish Mountain deposit. The pit shell was generated using the same inputs as the cutoff grade determination, as well as a \$2.40/t mining cost for ore and a \$2.20/t mining cost for waste. Overall pit slope angles range from 21 degrees to 35 degrees and are estimated based on geotechnical analysis of various zones in the deposit.
5. Factors that may affect the estimates include: metal price assumptions, changes in interpretations of mineralization geometry and continuity of mineralization zones, changes to kriging assumptions, metallurgical recovery assumptions, operating cost assumptions, confidence in the modifying factors, including assumptions that surface rights to allow mining infrastructure to be constructed will be forthcoming, delays or other issues in reaching agreements with local or regulatory authorities and stakeholders, and changes in land tenure requirements or in permitting requirement. Any other known legal, political, environmental, or other risks that could materially affect the potential development of the Mineral Reserves are detailed below in the section entitled "Forward-Looking Statements".
6. Estimates have been rounded and may result in summation differences.

Peer Information

Company	Source	Stage	Cut-Off Grade	AuEq Parameters & Calculation	Gold Grade	Mkt Cap (\$M)
Skeena	Technical Report (2023 FS)	Development	0.7 g/t AuEq; 3.2 g/t AuEq (u/g)	O/P Mineral Resources are reported at a cut-off grade of 0.7 g/t AuEq , using the equation $AuEq = ((Au \text{ (g/t)} * 1,700 * 0.84) + (Ag \text{ (g/t)} * 23 * 0.88)) / (1,700 * 0.84)$. U/G Mineral Resources are reported at a cut-off grade of 3.2 g/t AuEq , using the equation $AuEq = ((Au \text{ (g/t)} * 1,700 * 0.84) + (Ag \text{ (g/t)} * 23 * 0.88)) / (1,700 * 0.84)$.	2.6 g/t Au; 4.7 g/t Au (u/g)	\$1,654
Artemis	Technical Report (2020 PFS)	Commissioning	0.2 g/t AuEq	The AuEq values were calculated using US\$1,400/oz Au, US\$15/oz Ag, a gold metallurgical recovery of 93%, silver metallurgical recovery of 55%, and mining smelter terms for the following equation: $AuEq = Au \text{ g/t} + (Ag \text{ g/t} * 0.006)$.	0.56 g/t Au	\$3,808
Osisko Dev	Website/ Technical Report (2022 FS)	Development	2.0 g/t Au; 3.5 g/t Au (Bonanza Ledge)	N/A	3.33 g/t Au	\$265
Probe	Technical Report (2024 MRE)	Exploration	0.25 g/t Au for Beaufor; 0.4 g/t Au for Monique, Courvan and Pascalis; base case 0.19 g/t Au; 1.35 - 1.82 g/t Au (u/g)	N/A	1.43 g/t Au; 3.12 g/t Au (u/g)	\$364
First Mining	Website/ Technical Report (2021 PFS)	Development	0.3 g/t Au	N/A	0.94 g/t Au	\$151
Troilus	Technical Report (2023 MRE)	Development	0.3 g/t AuEq; 0.9 g/t AuEq (u/g)	O/P AuEQ equivalents were calculated as follows: Z87 Zone AuEQ = Au grade + 1.5628 * Cu grade + 0.0128 * Ag grade; J4/J5 Zone AuEQ = Au grade + 1.5107 * Cu grade + 0.0119 * Ag grade; SW Zone AuEQ = Au grade + 1.6823 * Cu grade + 0.0124 * Ag grade; X22 Zone AuEQ = Au grade + 1.5628 * Cu grade + 0.0128 * Ag grade Metal prices for the AuEQ formulas are: \$US 1,850/ oz Au; \$4.25/lb Cu, and \$25.00/ oz Ag; with an exchange rate of US\$1.00: CAD\$1.30 U/G AuEQ equivalents were calculated as follows: Z87 Zone AuEQ = Au grade + 1.5628 * Cu grade + 0.0128 * Ag grade; J4/J5 Zone AuEQ = Au grade + 1.5107 * Cu grade + 0.0119 * Ag grade; SW Zone AuEQ = Au grade + 1.6823 * Cu grade + 0.0124 * Ag grade; X22 Zone AuEQ = Au grade + 1.5628 * Cu grade + 0.0128 * Ag grade Metal prices for the AuEQ formulas are: \$US 1,850/ oz Au; \$4.25/lb Cu, and \$25.00/ oz Ag; with an exchange rate of US\$1.00: CAD\$1.30.	0.57 g/t Au; 1.35 g/t Au (u/g)	\$153
Banyan Gold	Technical Report (2024 MRE)	Exploration	0.3 g/t Au	N/A	0.63 g/t Au	\$76

PhotonAssay™ Technology

The Company has engaged MSALABS to utilize PhotonAssay™



The key benefits of the PhotonAssay™ technology are listed in more detail below.

	Time Per Sample ²	Sample Size	CO ₂ Per Sample	Hazardous Waste Per Sample	Energy Use Per Sample ³	Automation
Fire Assay	3-4 Hours	10-50 Grams	0.91 Kg	0.31 Kg	1.3 kWh	X
PhotonAssay™	2-3 Mins	250-650 Grams	0.455 Kg	0 Kg	0.65 kWh	✓
Benefits	80-90x Times Faster	13-25x Larger Sample	50% Less Emissions	Zero Hazardous Waste	50% Less Energy	Automated Process

1. Comparison of PhotonAssay™ and Fire Assay per Frost & Sullivan industry report.
2. Fire assay shown based on the minimum processing time. 24-hours is generally considered rapid turn-around time in practice.
3. Assumes same electricity source is used.

Source: <https://www.msalabs.com/photonassay>



Peter Mah
President & CEO

Investor Relations
(604) 398-4377
info@spanishmountaingold.com

spanishmountaingold.com

TSX-V: SPA | OTCQB: SPAUF | FSE: S3Y



Subscribe for Updates
Scan the QR code to sign up for emails

