



Signature Resources Ltd.

Corporate Update

Zurich

April 2026

FORWARD LOOKING STATEMENTS

The materials contained herein are for informational purposes only. This is not considered an offer or solicitation to sell securities in any company in any manner.

Except for the statements of historical fact contained herein, the information presented constitutes "forward-looking statements" within the meaning of the Securities Act (Ontario). Such forward-looking statements involve known and unknown risks, uncertainties and other factors which may cause the actual results, performance or achievement of the Company to be materially different any future results, performance or achievements expressed or implied by such forward looking statements. There may be factors that involve risk and uncertainty that cause results not to be as anticipated, estimated or intended. There can be no assurance that such statements will prove to be accurate as actual results, and future events could differ materially from those anticipated in such statements. Accordingly, the reader should not place undue reliance on forward-looking statements.

To the investor. The technical information reported herein is part of a NI 43-101 Technical Report on the Lingman Lake property as of May 31, 2025 completed by consulting geologists for Watts, Griffis and McOuat (WGM). The mineral resource estimate presented herein represent the first mineral resource estimate that has been prepared for Lingman Lake deposit in accordance with NI 43-101 and the current CIM definition Standards for Mineral Resources and Mineral Reserves (November 2019). There are 313 drill holes in the database provided to WGM related to Lingman Lake property. The current mineral resource estimate for the Lingman Lake property prepared by WGM utilizes results from 240 core boreholes drilled by previous owners of the property during the period of 1987 to 2024. The mineral resource estimation work was completed by Mr. Farshid Ghazanfari, M.Sc., P.Geo., an independent Qualified Person as such term is defined in NI 43-101. In the opinion of WGM, the resource evaluation reported herein is a reasonable representation of the global gold resources found in the Lingman property at the current level of sampling. The mineral resources were estimated in conformity with generally accepted CIM Estimation of Mineral Resource and Mineral Reserves Best Practices guidelines and are reported in accordance with NI 43-101. Mineral resources are not mineral reserves and do not have demonstrated economic viability. There is no certainty that all or any part of the mineral resource will be converted into mineral reserve. The technical information contained in this presentation has been reviewed by Walter Hanych P.Geo, consultant and Head Geologist and a Qualified Person as defined in National Instrument 43-101.

The 43-101 technical report of the Lingman Lake Project established a current mineral resource estimate of 95,200 oz Au at a grade of 1.38 g/t in the indicated category and 674,320 oz Au at a grade of 1.14 g/t in the inferred category. Additional information regarding resource estimates is available in the technical report entitled, "Technical Report on the Lingman Lake Property" dated May 31, 2025, prepared by Gerhard Kiessling, P.Geo, WGM Associate Geologist, Parshid Ghazanfari, P.Geo., WGM Associate Resource Geologist, Martin Drennan, P. Eng., WGM Associate Mining Engineer, Cameron Finlayson, WGM Manager, Exploration Services and Jeff Plate, CFA, P.Geo., WGM Vice President, available on the Company's SEDAR profile at www.sedar.com

Simple Approach with Key Pieces in Place



Established Gold Project with District Potential

Asset in a Tier-One Jurisdiction

- Prolific Red Lake District in Ontario, Canada
- 100% owned near surface gold discovery, Lingman Lake Project
- Company-owned drill rigs and exploration camp improves exploration efficiency

Developing Regional Infrastructure will improve access to project

Initial Mineral Resource Estimate Completed

- Indicated Resource 95,200 oz Au at 1.38 g/t
- Inferred Resource 674,320 oz Au at 1.14 g/t

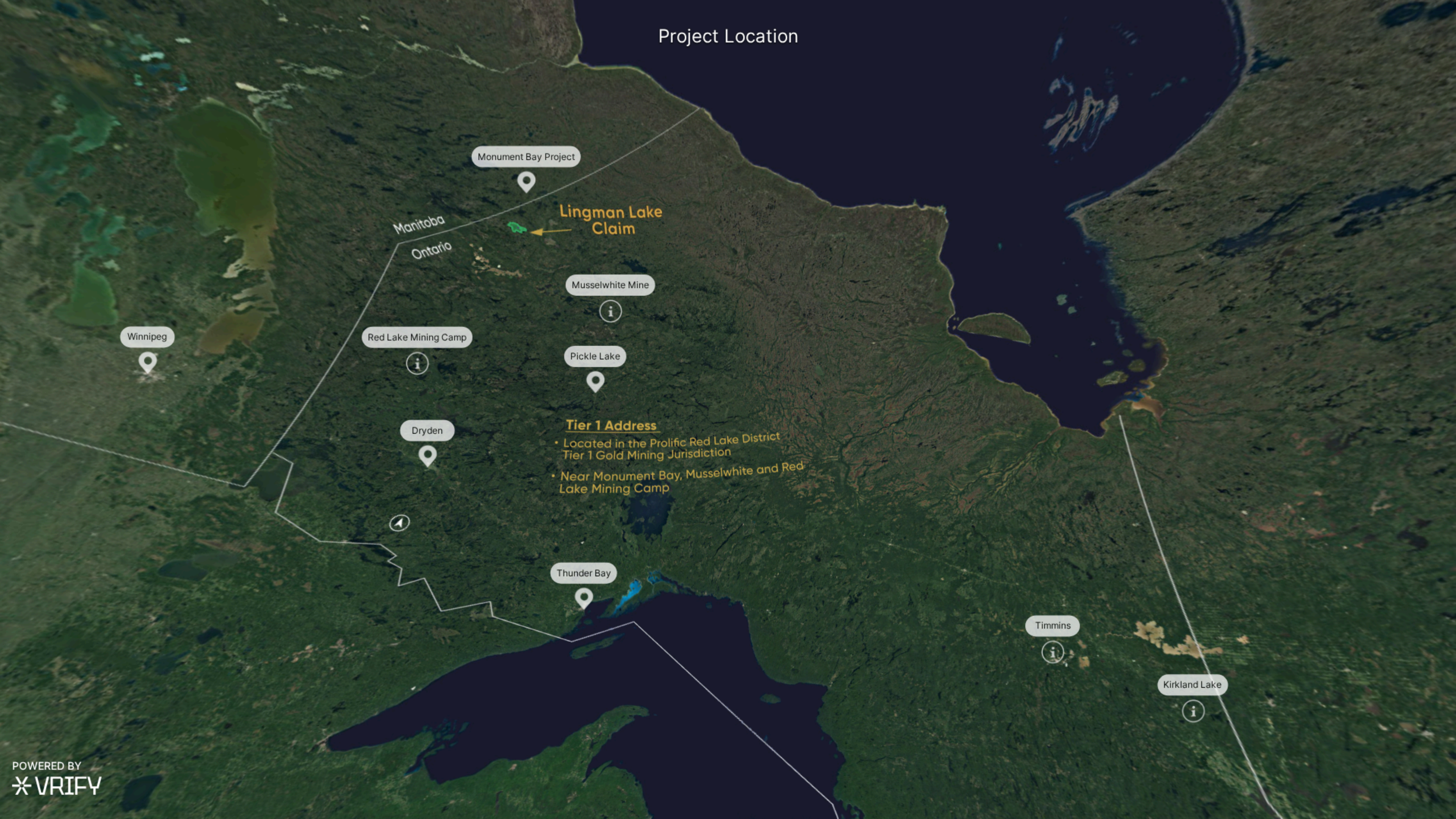
Expansion of resource through extension of East-West lateral, at depth and in-fill opportunities.

Regional Targets Identified

14 High Potential Targets identified on 24,821 hectare land package

- **Airborne geophysics and LIDAR completed** in 2021 on the complete 100% owned land package covering 85% of the entire Lingman Lake Greenstone belt
- **Highly favorable geologic conditions** for the possibility of multiple gold discoveries
- **Field work will better identify and prioritize the regional targets**

Project Location



Monument Bay Project

Lingman Lake Claim

Musselwhite Mine

Winnipeg

Red Lake Mining Camp

Pickle Lake

Dryden

Thunder Bay

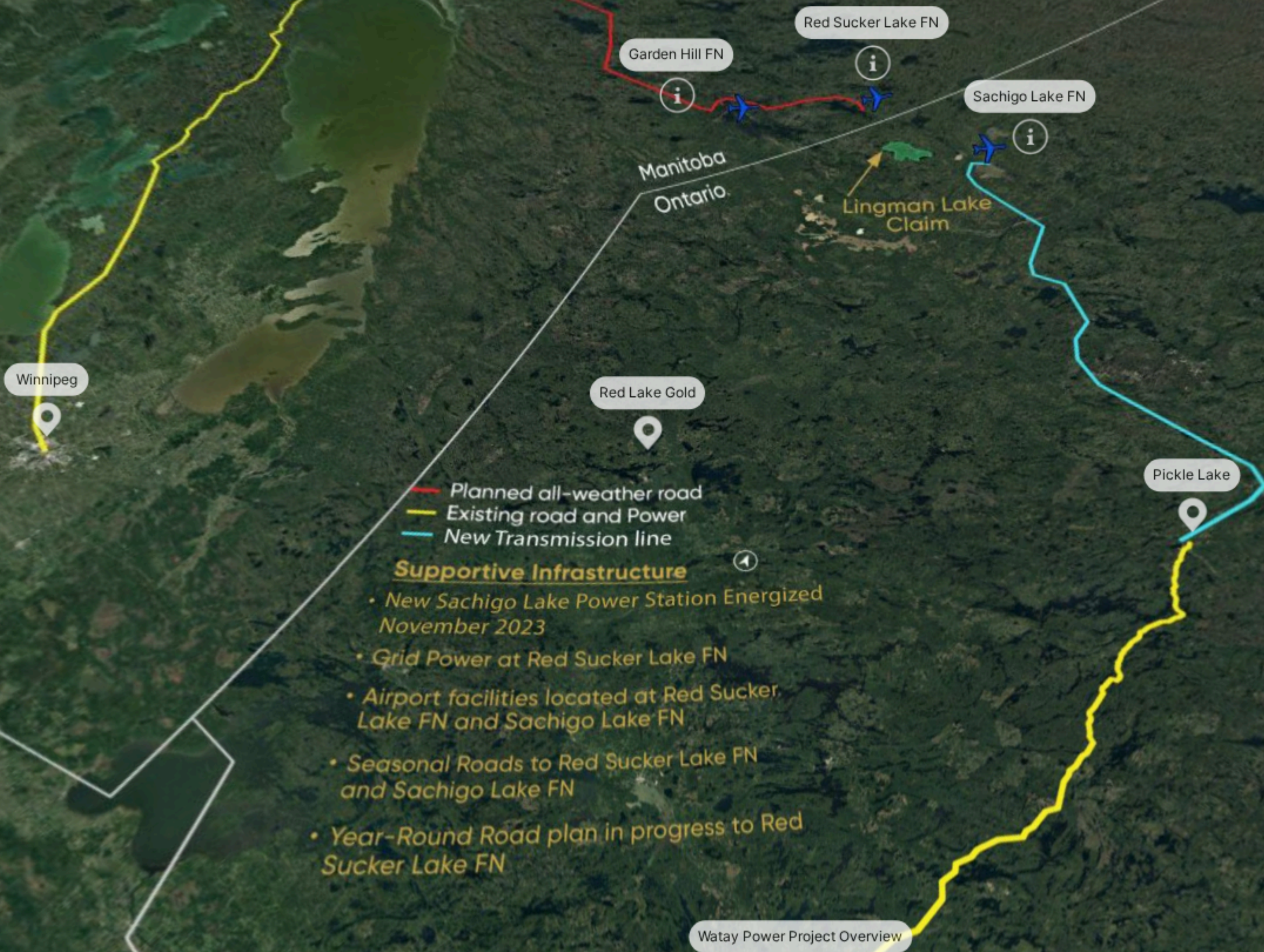
Timmins

Kirkland Lake

Tier 1 Address

- Located in the Prolific Red Lake District Tier 1 Gold Mining Jurisdiction
- Near Monument Bay, Musselwhite and Red Lake Mining Camp

Key Regional Infrastructure



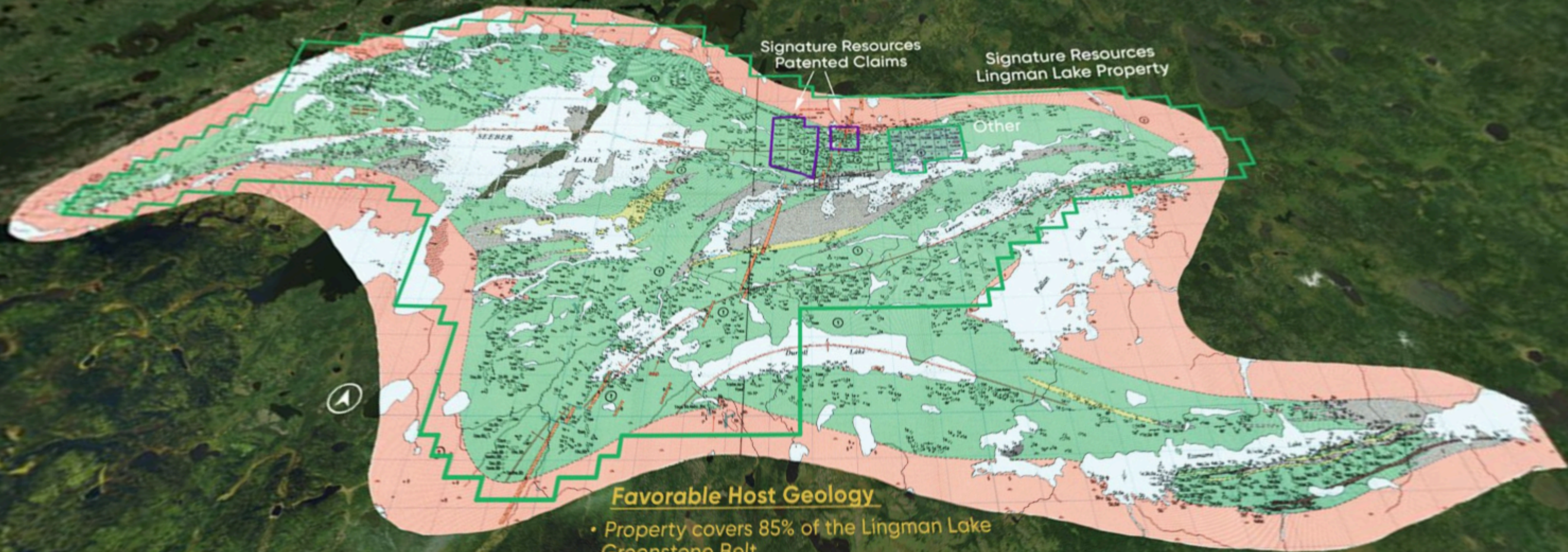
- Planned all-weather road
- Existing road and Power
- New Transmission line

Supportive Infrastructure

- New Sachigo Lake Power Station Energized November 2023
- Grid Power at Red Sucker Lake FN
- Airport facilities located at Red Sucker Lake FN and Sachigo Lake FN
- Seasonal Roads to Red Sucker Lake FN and Sachigo Lake FN
- Year-Round Road plan in progress to Red Sucker Lake FN

Watay Power Project Overview

Geologic setting



Favorable Host Geology

- Property covers 85% of the Lingman Lake Greenstone Belt
- Known significant gold and polymetallic mineralization associated with northern margins of Greenstone Belt
- 90% of this margin is covered by the Lingman Lake property
- Bi-directional tectonics modified Greenstone Belt resulting in complex internal structural domains

Drilling and UG Workings

Historical Resource at Lingman Lake Project

Au (g/t)

- 0.3 - 1.0
- 1.0 - 3.0
- 3.0 - 5.0
- 5.0 - 10.0
- > 10.0

Decommissioned Underground Infrastructure including:
131m Shaft, 3 levels at depths of 46, 184, and 122 m,
and vent raise (decommissioned);
facilitated UG exploration drilling and bulk sampling

Historical UG Workings (Decommissioned) / High Grade Bulk Sampling

Drill hole traces

200m

Post-Mineralization Diabase Dike

Drilled depth of gold discovery

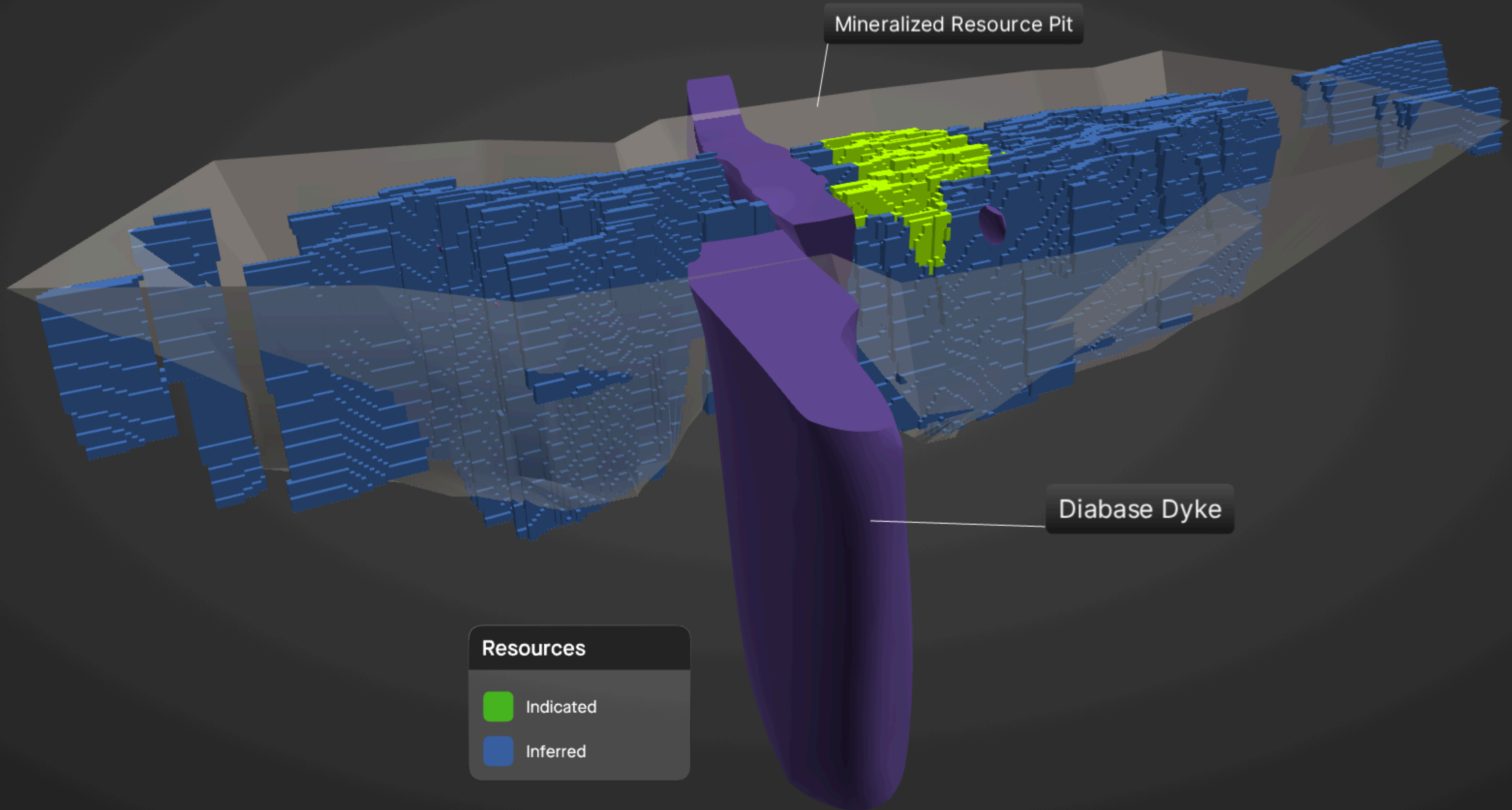
43,000m of Drilling included in Initial MRE

Lingman Lake Deposit Mineral Resource Estimate

LINGMAN LAKE DEPOSIT MINERAL RESOURCE STATEMENT*

Class	Tonnes (Mt)	Grade Au (g/t)	Contained Metal Au (oz)
Indicated	2.146	1.38	95,200
Inferred	18.398	1.14	674,320

- *Note:
1. The effective date of Mineral Resources is May 31, 2025.
 2. Mineral resources are reported in situ and undiluted from a conceptual pit shell with a slope angle of 55 degrees.
 3. Mineral resources are not mineral reserves and do not have demonstrated economic viability.
 4. An average default specific gravity of 2.83 g/cm³ was used.
 5. Open pit mineral resources are reported at COG of 0.30 g/t gold.
 6. All figures are rounded to reflect the relative accuracy of the estimate.

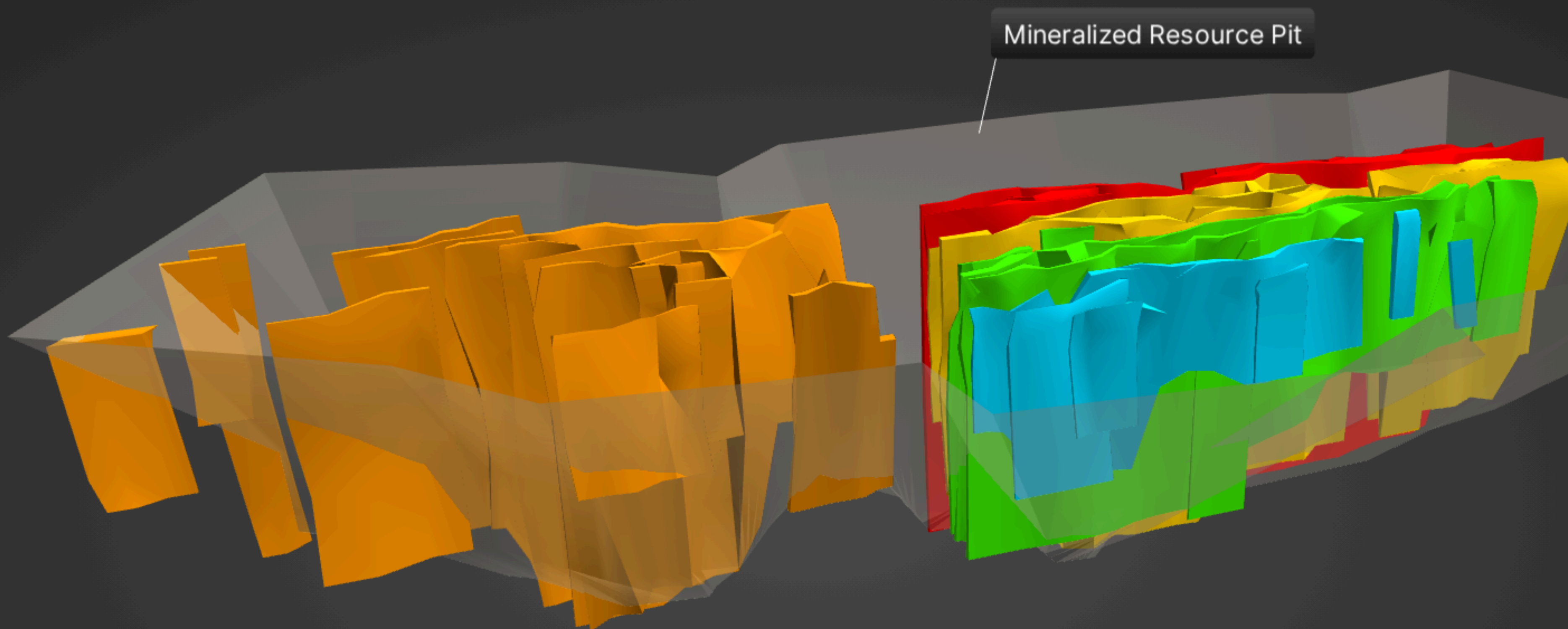


Mineralized Resource Pit

Diabase Dyke

Resources

- Indicated
- Inferred



Mineralized Resource Pit

Mineralized Zones

- North Zone
- West Zone
- Central Zone
- South Zone
- 11650 Zone

Cut-off Grade Sensitivity Demonstrates Solid Higher-Grade Core within the Deposit

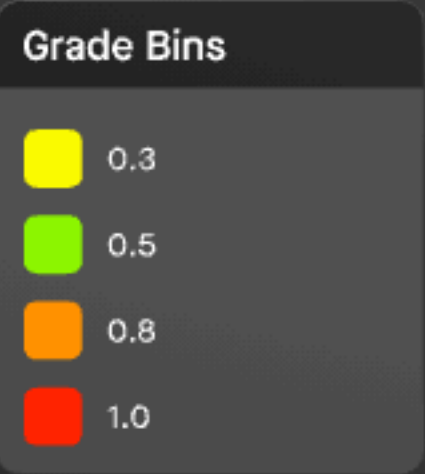
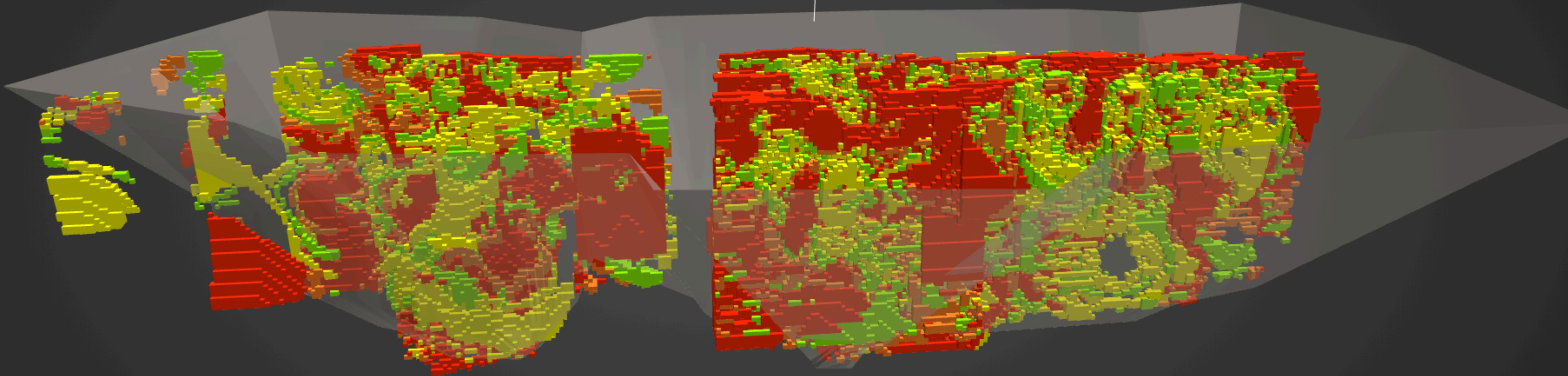
GLOBAL CUT-OFF GRADES SENSITIVITY

COG Au (g/t)	Tonnes (Kt)	Grade (Au g/t)
0.00	27,108.37	0.92
0.10	25,446.29	0.98
0.20	23,093.00	1.06
0.30	20,544.23	1.16
0.40	18,065.26	1.28
0.50	15,978.49	1.38
0.60	14,065.48	1.50
0.70	12,246.87	1.62
0.80	10,749.45	1.74
0.90	9,426.80	1.87
1.00	8,310.11	1.99

MRE cut-off grade is 0.30 g/t Au

Using a cut-off grade of 1.00 g/t results in an estimated 531,000 oz Au at an average grade of 1.99 g/t.

Mineralized Resource Pit



Cut-off grade of 1.0 results in 531,000 at an average grade of 1.99 g/t

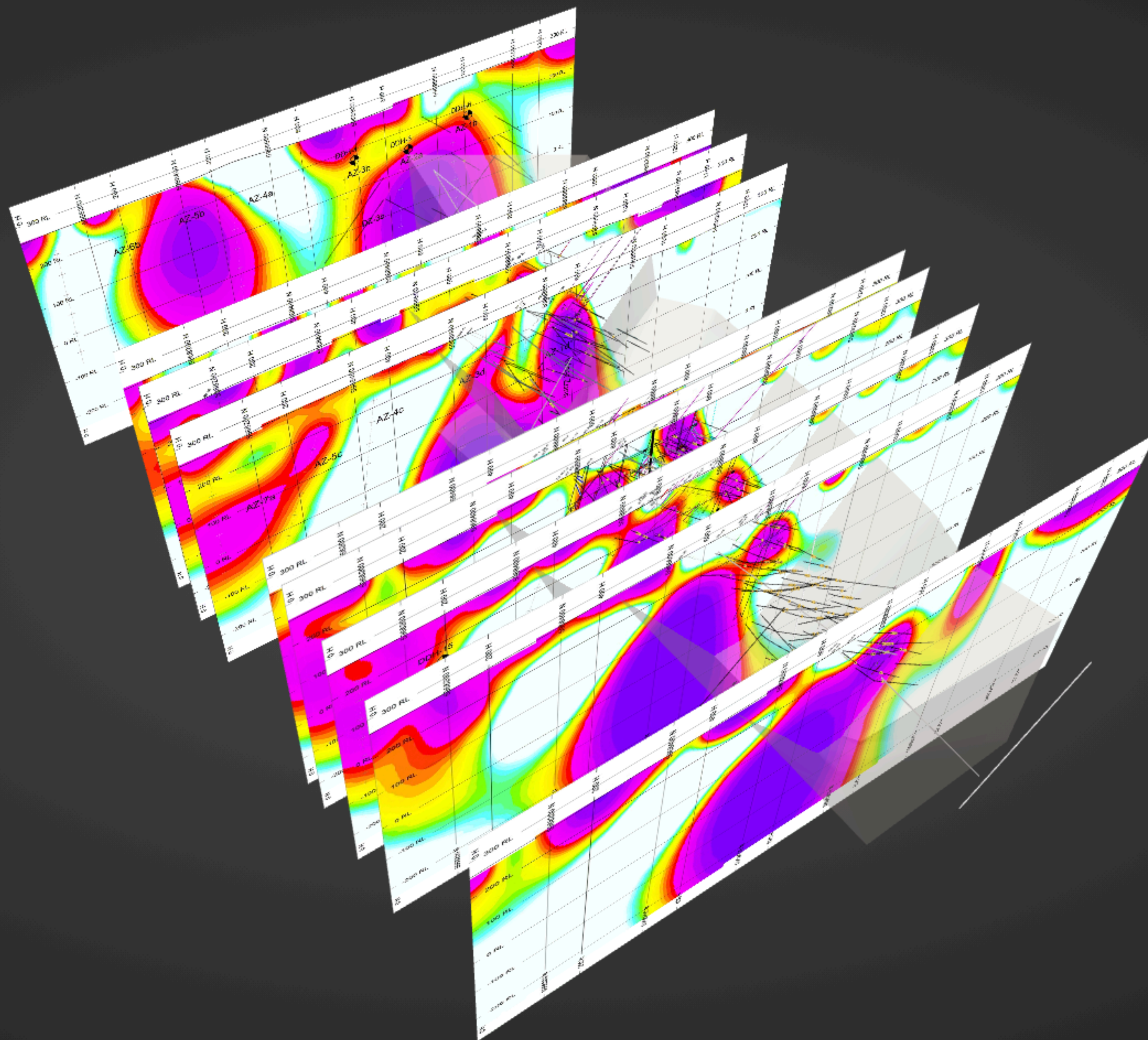
Gold Department Study Provides Positive Results

Highlights of Department Study:

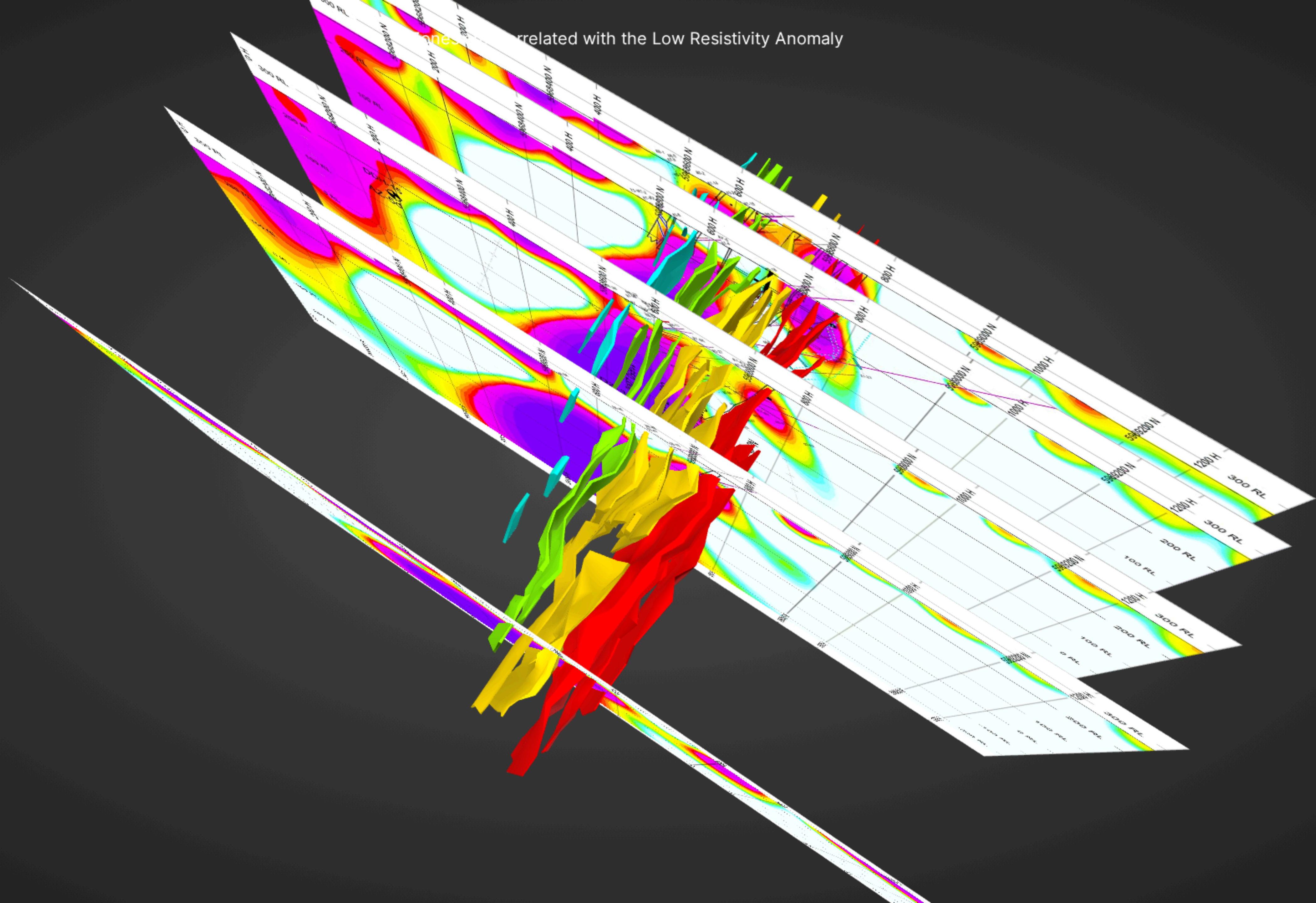
- Free milling gold and gold-silver alloys in high grade portion of the system
- Majority of Gold grains are exposed or Partially Exposed
- Returned Gold recoveries ranging from 92.6% - 96.6% across the four Gold Zones
- Association between gold mineralization and arsenopyrite is minimal
- Results provide good guidance for designing metallurgical analysis of Lingman Lake

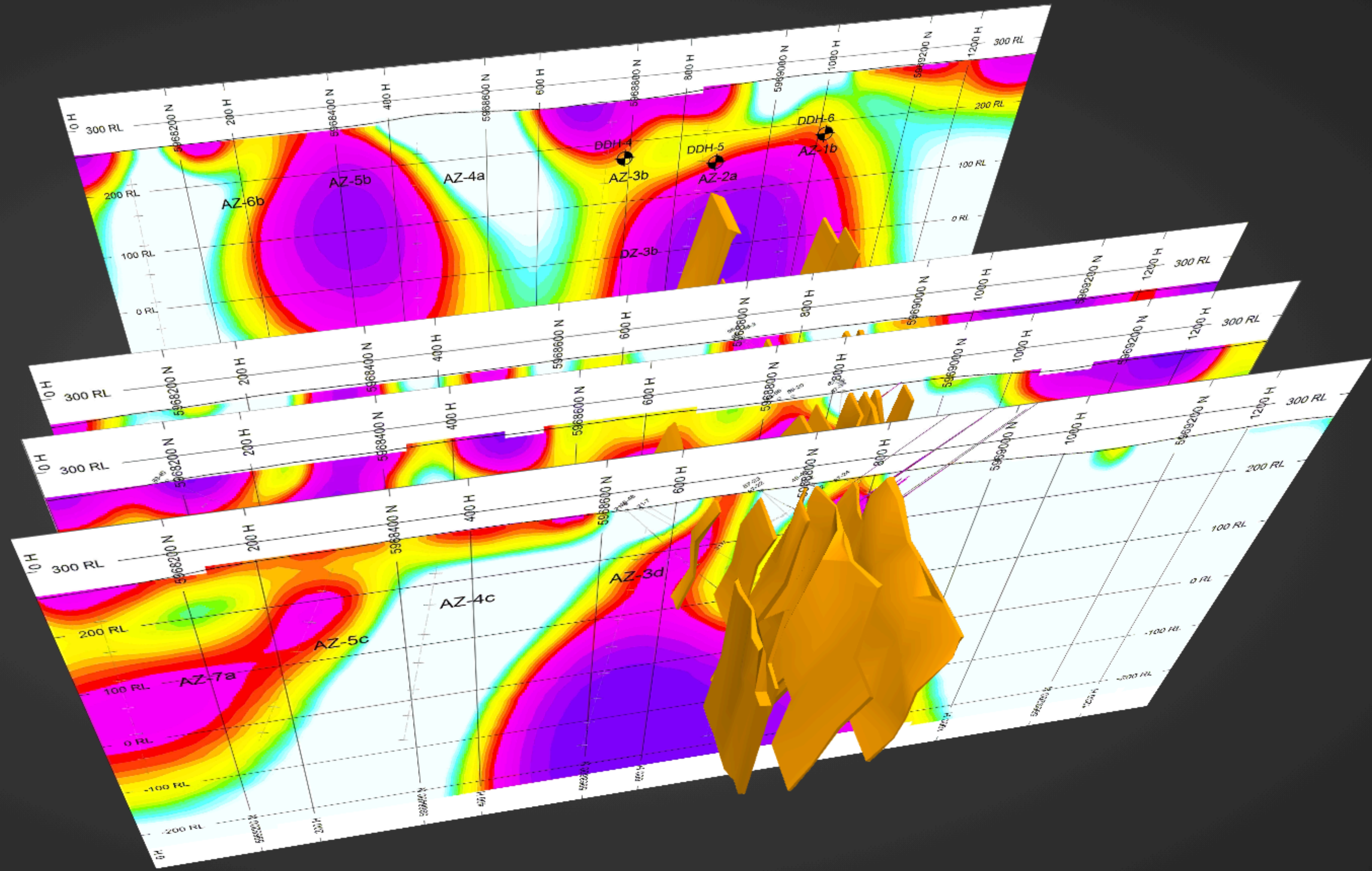
Sample ID	Gold Recovery by Heavy Liquid Separation (@SG 2.85)		Au Recovery for HLS Float by CN Leach, % 24 h	Gold Recovery for HLS Float (%)	Gold Recovery for Overall Sample (%)
	HLS Sink	HLS Float			
WZB	80.00	20.0	63.2	12.64	92.64
NZB	83.50	16.5	79.6	13.13	96.63
SZA	82.30	17.7	60.5	10.71	93.01
CZA	71.20	28.8	74.4	21.43	92.63

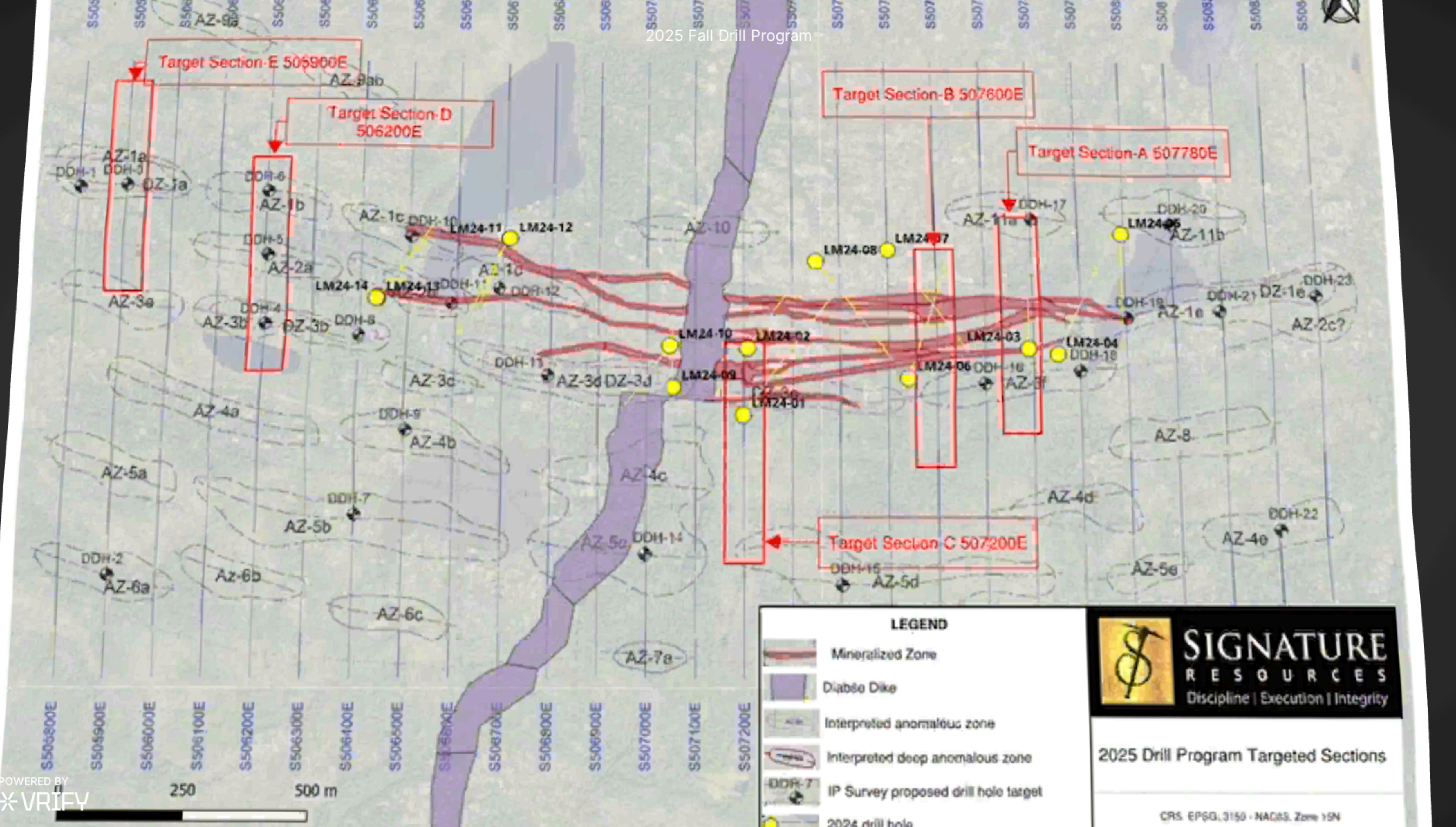
Modeled Resource Follows Low Resistivity Anomaly



planes correlated with the Low Resistivity Anomaly





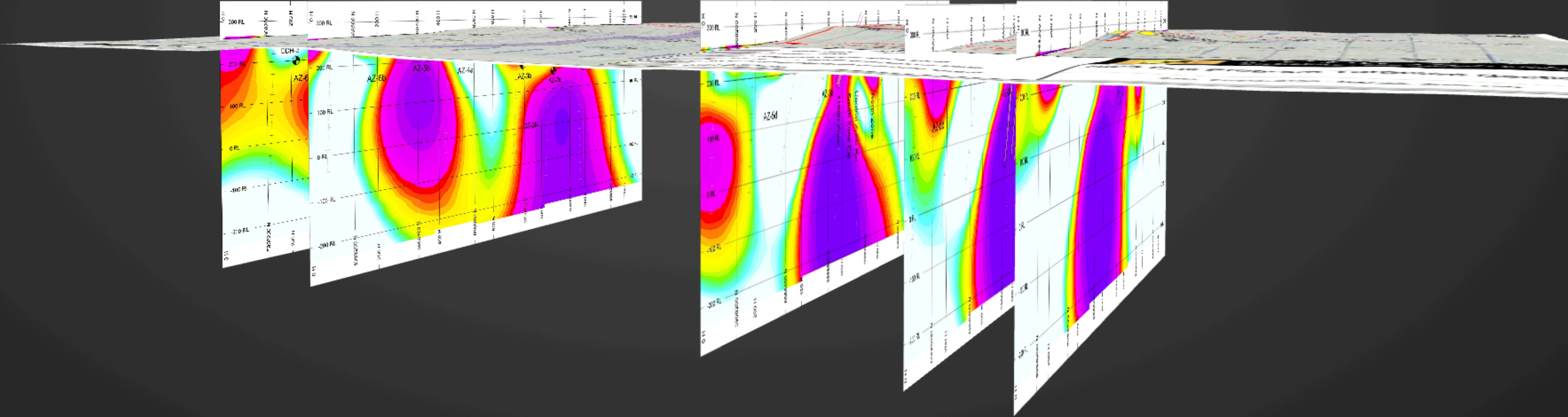


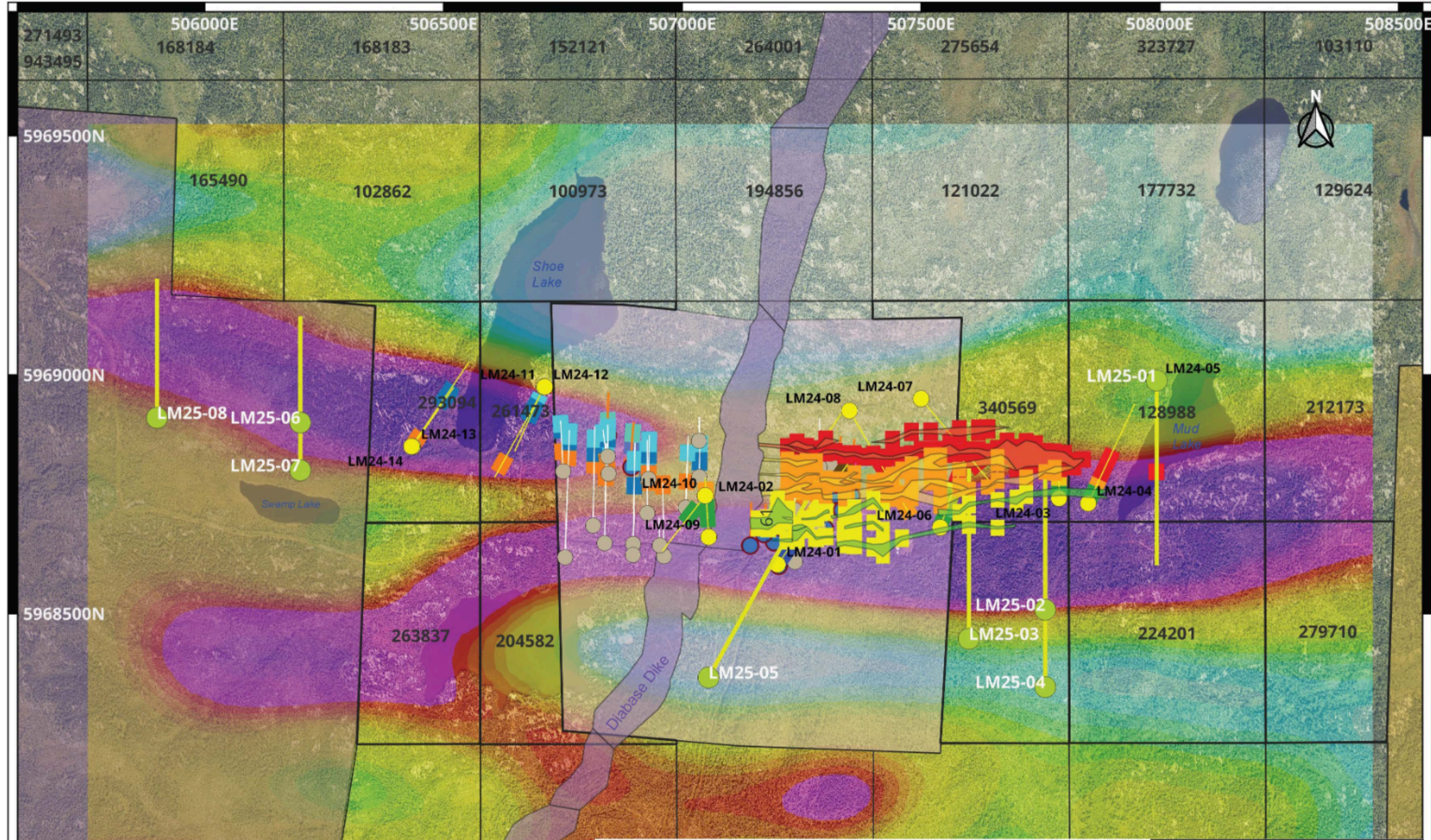
LEGEND

- Mineralized Zone
- Diabolo Dike
- Interpreted anomalous zone
- Interpreted deep anomalous zone
- IP Survey proposed drill hole target
- 2024 drill hole

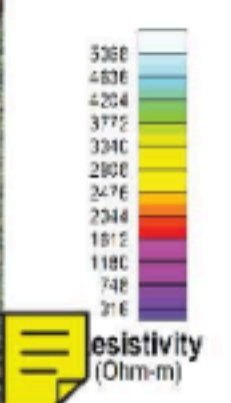
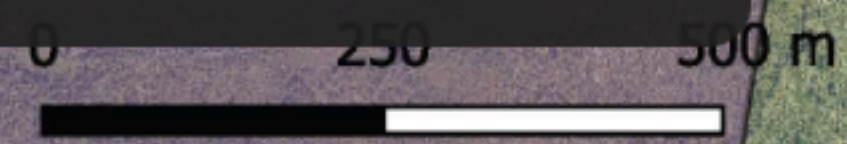
SIGNATURE
RESOURCES
Discipline | Execution | Integrity

2025 Drill Program Targeted Sections





Winter Drill Program Green Dots with yellow drill traces.
3,900 m planned drilling.



- Zones in DDH**
- North Zones
 - Central Zones
 - South Zones
 - West Zones

- Zones at Surface**
- North Zones
 - Central Zones
 - South Zones

- Drill Holes**
- 2018
 - 2021
 - 2024
 - 2025

CRS: UTM NAD 83, Zone 15N EPSG: 3159



Gold Zones-Drill Holes Compilation
Resistivity at 225 m

5985500

5983700

LM25-04 LM25-05 LM25-03 LM25-02

LM24-05-25-01

DIABASE DIKE

DIABASE DIKE

LM25-05 SZ
target area
Section 507240E

LM25-01
Section 507760E
Grade discs intercepts

LM25-05 NZ
target area
Section 507350E

SOUTH ZONE

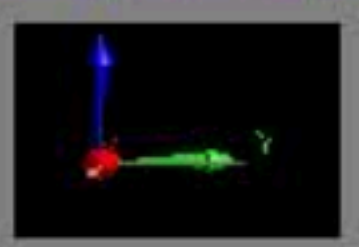
CENTRAL ZONE

NORTH ZONE

COMPOSITE
SECTION VIEW

LM25-02 -
Section 508000E
Grade discs intercepts

507240E to 508000E
Looking west



SIGNATURE
RESOURCES
Discipline | Execution | Integrity

NOTES TO CORE IMAGES

Section of North Zone from 511.80m - 520 m. Variably silicified mafic volcanic, weak shear with variable sulphide content (pyrite and pyrrhotite).

Note difference between sections of un-mineralized massive mafic volcanic with weak, but anomalous gold values. (bright green numbers) and higher grade altered mafic volcanic rock.

Footwall is the underside of an inclined geological feature. North zone dips 70-80 deg south.

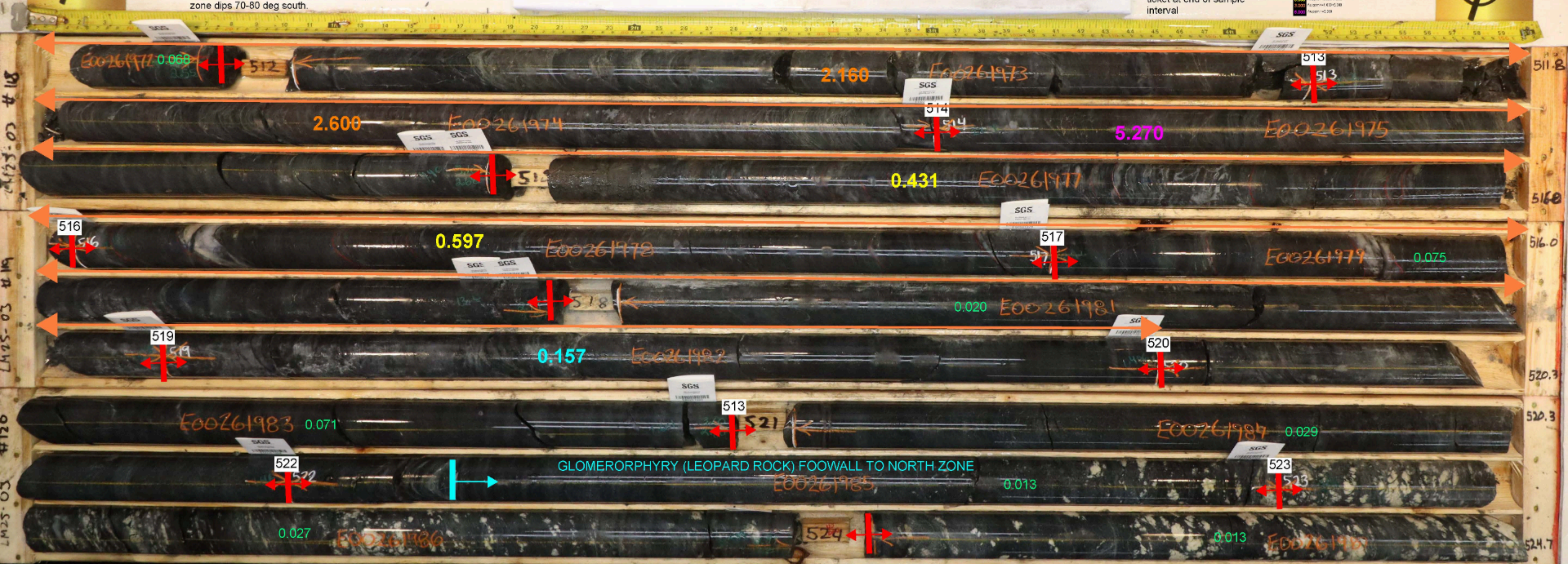
LM25-03 Box 118 to 120 511.8-524.7m

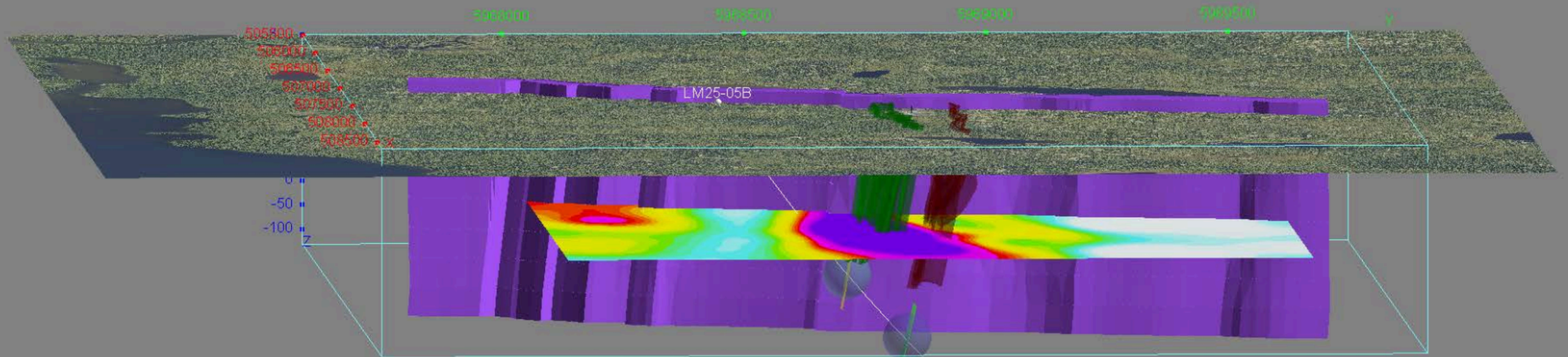
CORE SIZE - NQ - 47.6 mm

LEGEND AND SYMBOLS

- Sample interval
- Lithological contact (see notes)
- Zone boundary
- 513** Sample number
- Au grade 0.068
- Au grade 0.200
- Au grade 0.431
- Au grade 0.005

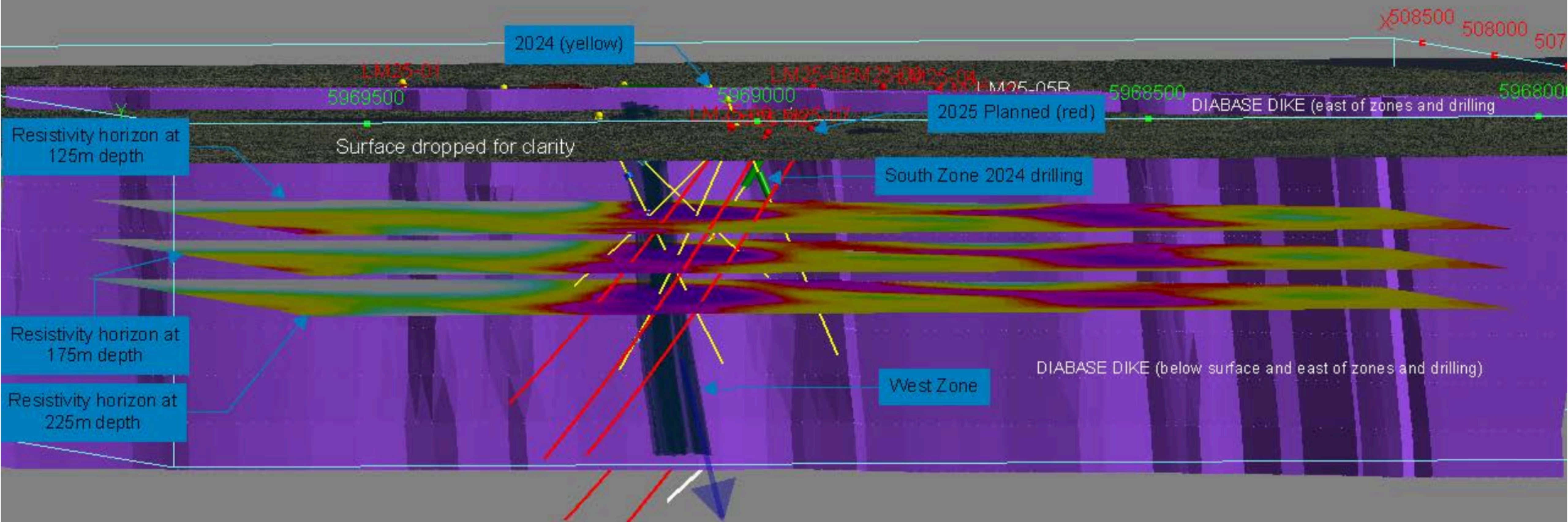
Orange numbers on core are sample numbers corresponding to assay ticket at end of sample interval





0 150 300 450 600 750

Hole 25-05 near the Dike are modeled to intercept South and North Gold Zones within the Bubbles.



Resistivity horizon at 125m depth

Resistivity horizon at 175m depth

Resistivity horizon at 225m depth

Surface dropped for clarity

South Zone 2024 drilling

West Zone

DIABASE DIKE (below surface and east of zones and drilling)

2024 (yellow)

2025 Planned (red)

DIABASE DIKE (east of zones and drilling)

LM25-01

LM25-02

LM25-03

LM25-04

LM25-05

LM25-05R

X 508500

508000

507000

5969500

5969000

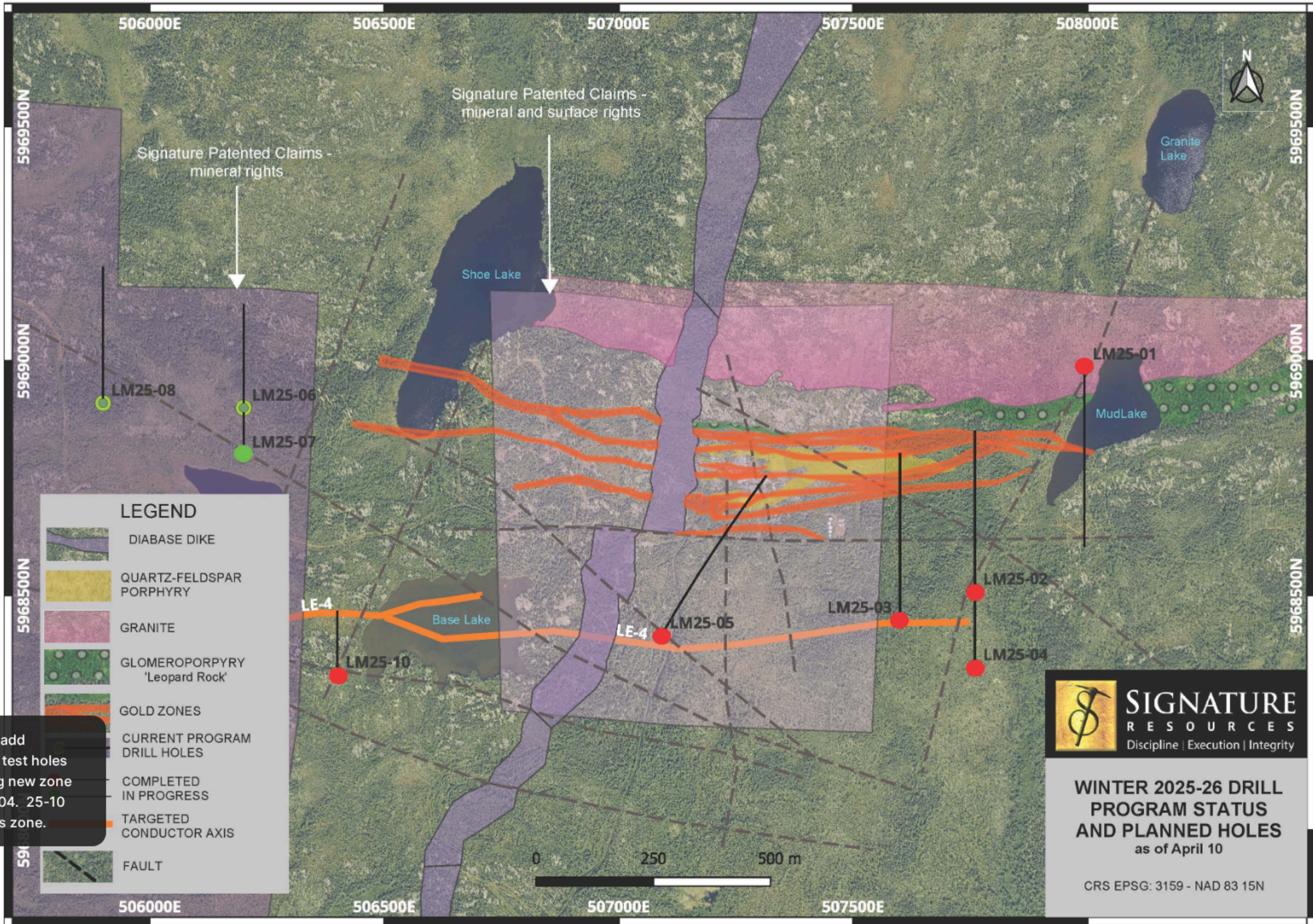
5968500

5968000

3D VIEW LOOKING EAST

Proposed drill holes West of the dike.





LEGEND

- DIABASE DIKE
- QUARTZ-FELDSPAR PORPHYRY
- GRANITE
- GLOMEROPORPHYRY 'Leopard Rock'
- GOLD ZONES
- CURRENT PROGRAM DRILL HOLES
- COMPLETED IN PROGRESS
- TARGETED CONDUCTOR AXIS
- FAULT

Plan Modified to add Conductor Zone test holes after intercepting new zone at the top of 25-04. 25-10 added to test this zone.



WINTER 2025-26 DRILL PROGRAM STATUS AND PLANNED HOLES
as of April 10

CRS EPSG: 3159 - NAD 83 15N

LM25-04 Box 46 to 48 190.1-203.0m



9h-10-51M

LM25-04-47

9h-10-52M

190.1

E00262229

191

E00262231

192

E00262232

193

E00262233

194

194.4

E00262234

195

E00262235

196

E00262237

197

194.4

E00262238

198

E00262239

198.7

E00262241

200

198.7

E00262242

201

E00262243

202

E00262244

203

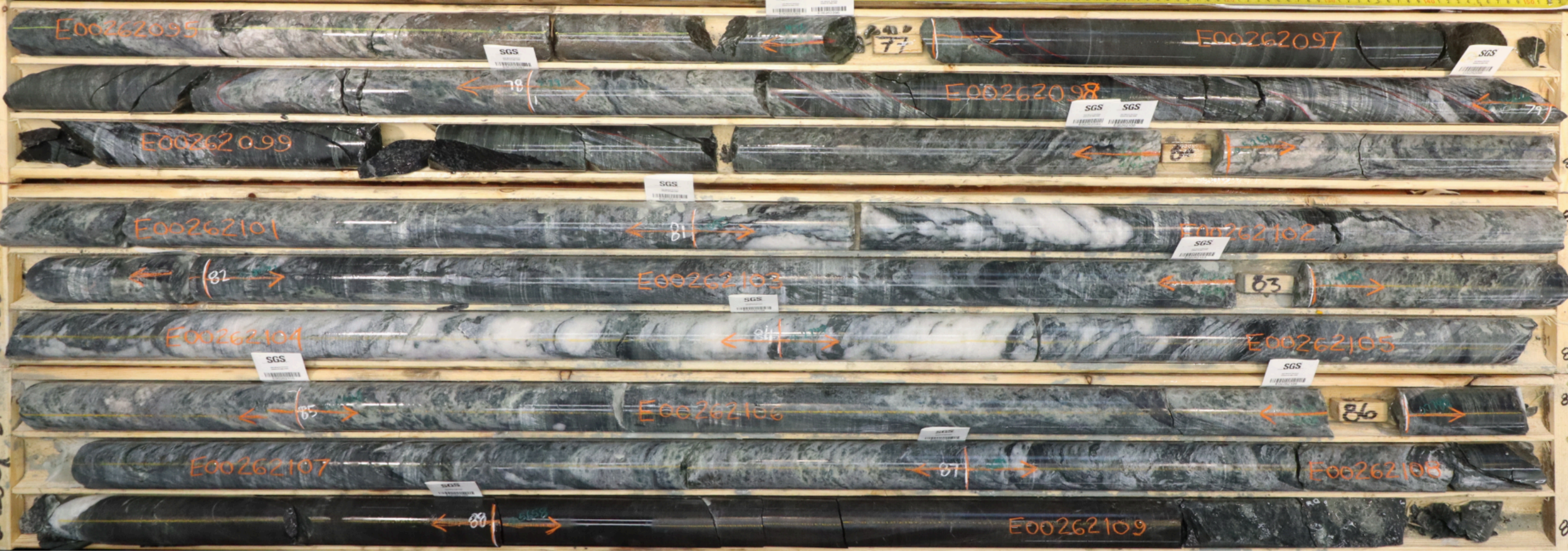
203.0

LM25-04 Box 19 to 21 76.2-88.8m

EOH



LM25-04-19
LM25-04-20
LM25-04-21



76.2
80.3
80.3
84.7
84.7
88.8

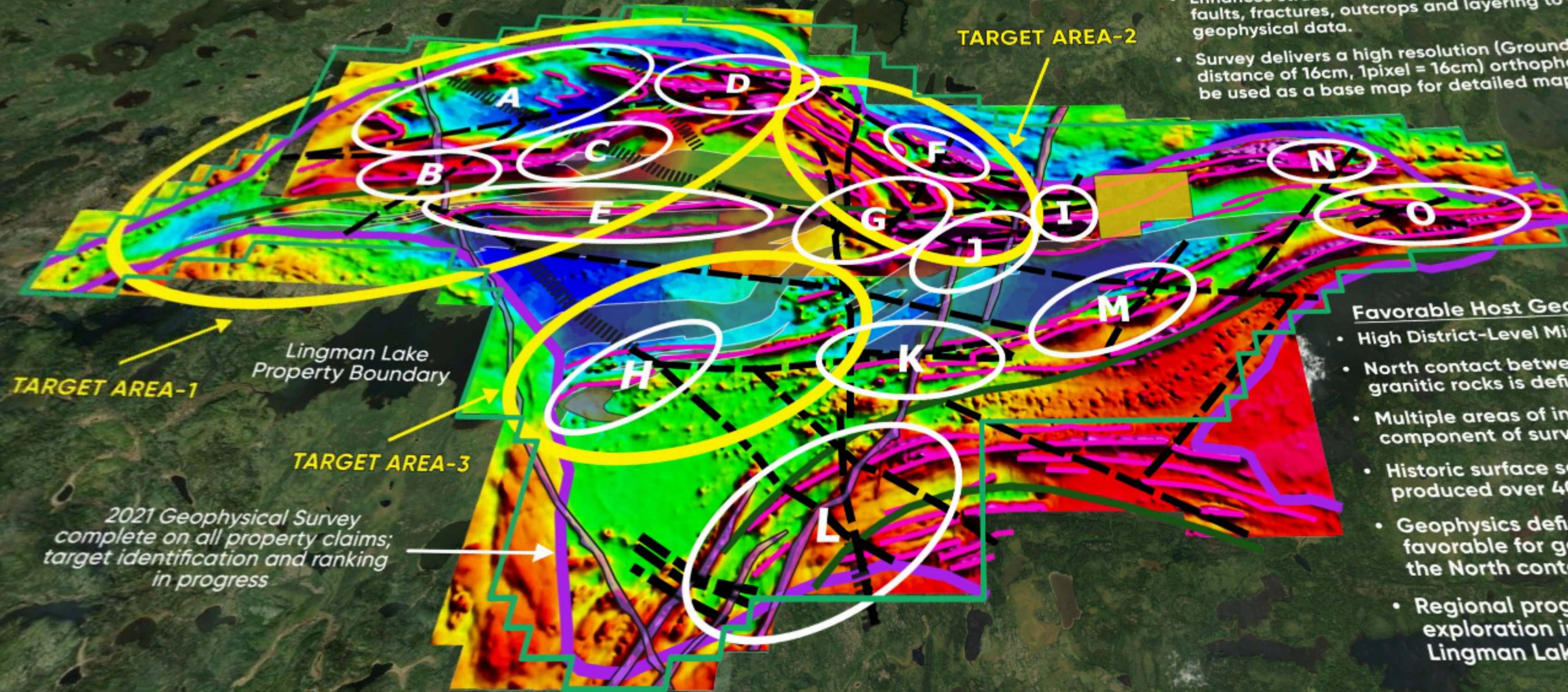
Regional Geophysics and Targets

Manitoba
Ontario

LIDAR SURVEY COMPLETED ON ENTIRE PROPERTY

- Utilized for regional target selection, drill and infrastructure planning.
- Penetrates surface vegetation to create a bare earth detailed Digital Terrain Model of entire property.
- Enhances structural features of bedrock such as folds, faults, fractures, outcrops and layering to compliment geophysical data.
- Survey delivers a high resolution (Ground sampling distance of 16cm, 1pixel = 16cm) orthophoto mosaic to be used as a base map for detailed mapping.

TARGET AREA-2



Favorable Host Geology

- High District-Level Mineralization potential
- North contact between volcanic assemblage and granitic rocks is defined by the magnetic survey
- Multiple areas of interest defined by VLF and Mag component of surveys
- Historic surface sampling including blast trenching produced over 40 mineral occurrences of high interest
- Geophysics defines structurally complex zones favorable for gold mineralization including inflections in the North contact
- Regional program to initiate the Spring 2021 exploration in parallel with continued drilling at the Lingman Lake deposit

2021 Geophysical Survey complete on all property claims; target identification and ranking in progress

32.5 km



5000E 490000E 495000E 500000E 505000E 510000E 515000E 520000E

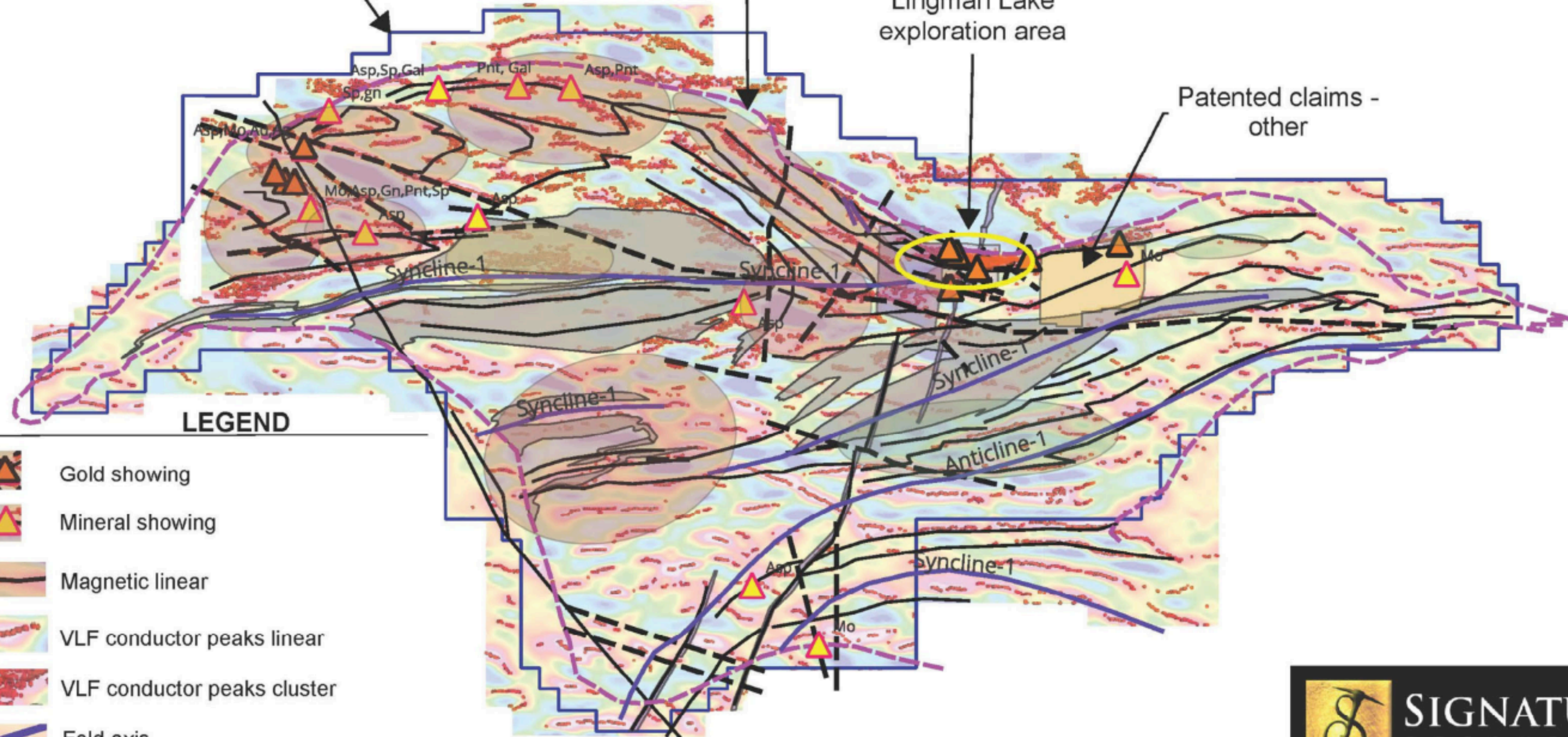


Lingman Lake property

Granite-Greenstone Belt contact

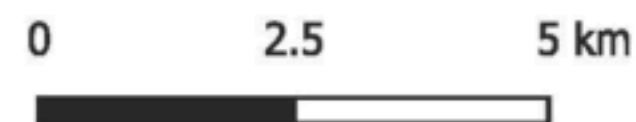
Lingman Lake exploration area

Patented claims - other



LEGEND

- Gold showing
- Mineral showing
- Magnetic linear
- VLF conductor peaks linear
- VLF conductor peaks cluster
- Fold axis
- Fault
- Diabase dike
- Target areas
- Sediments



Notes

VLF Conductors, Base map Total Field VLF and Magnetic Lines from Very Low Frequency Electromagnetic and High Resolution Magnetic Surveys flown in 2018 and 2021.

Base map is Total Field VLF-EM Amplitude from 2018 and 2021 surveys

Structural Compilation of Regional Land Package



Lingman Lake Property Compilation Map

CRS EPSG: 3159 - NAD 83 15N

5000E 490000E 495000E 500000E 505000E 510000E 515000E 520000E

Why Own Signature?

Our Value Proposition

- ✓ The Company's significant investment in its own drilling rigs and exploration camp improves control and efficiency over drilling operations
- ✓ Control over 85% of greenstone belt in a very favorable mining jurisdiction
- ✓ Improving regional infrastructure approaching the Lingman Lake Property
- ✓ Improved modeling of the Deposit allows for more targeted drilling program.
- ✓ Publication of Initial Mineral Resource Estimate confirms the potential of the Lingman Lake Gold Deposit and the opportunity for expansion
- ✓ Positive results of Gold Department study showed good gold recovery potential
- ✓ Insiders own 43% aligning interests with shareholders

Upcoming Catalysts

Completion of Winter Drill Program will provide continuous drill results first half of the year.

Using the results of the Gold Department Study to design and complete metallurgical study in 2026.

Key Components in Place Underpinning Fundamental Value Generation and Risk Management

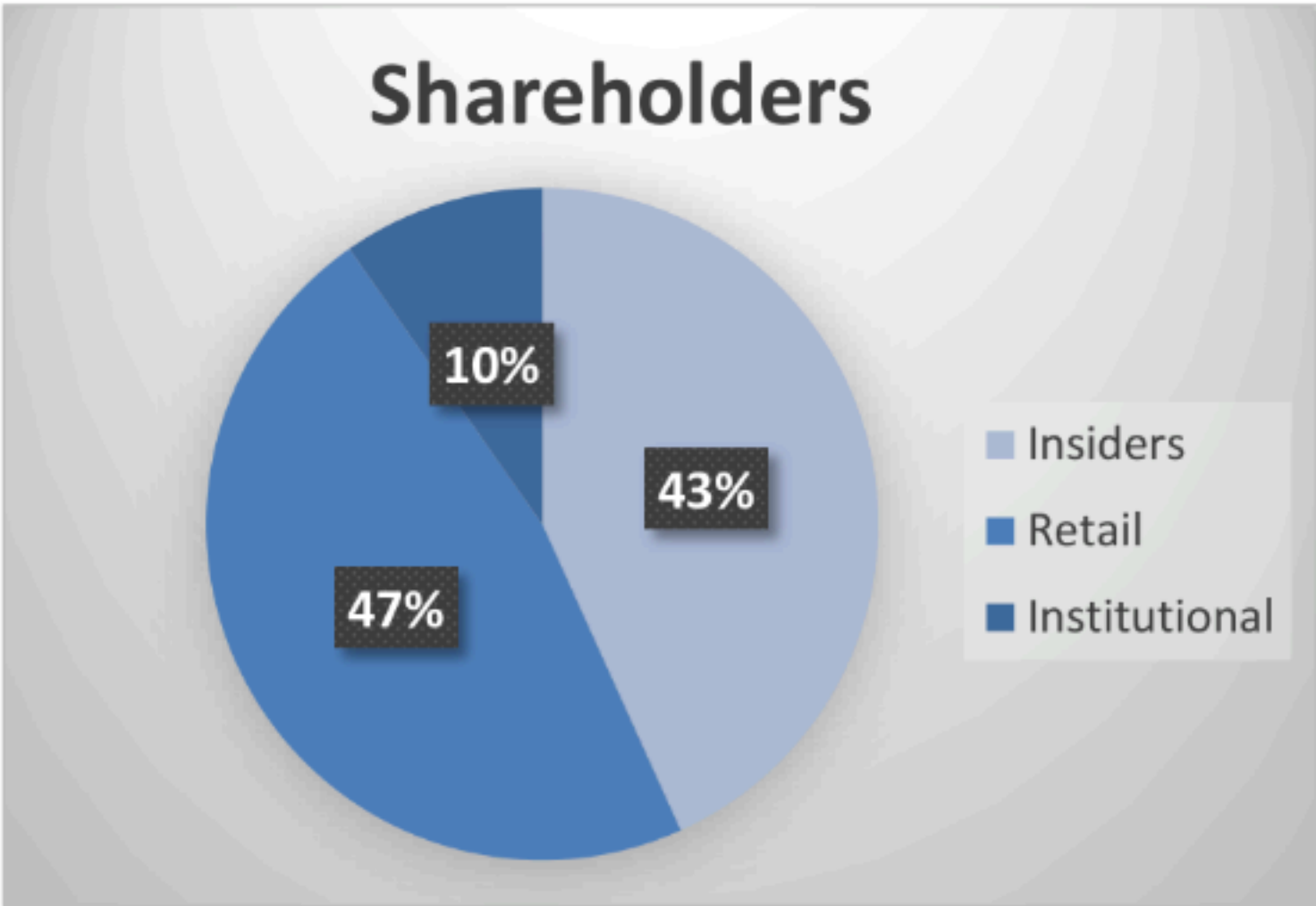
- ✓ Fully Operating Exploration Camp
- ✓ 100% owned land claims package hosting the Lingman Lake Gold Project
- ✓ 2 x 100% owned drill rigs capable of drilling to 1,200m total depth.
- ✓ Significant new property-wide geologic data collected
- ✓ Completed compilation of new and historic exploration data with updated geologic modelling

Capital Structure and Ownership

As of January 31, 2026:

- Shares Outstanding: 240,553,198
- Options Outstanding: 9,670,000
 - Avg Exercise Price \$0.12
- Warrants Outstanding: 29,177,667
 - Ex Price \$0.10 October 2026 expiry

Cash and Investments: \$1,257,742
Debt Outstanding: \$0.000
Annual G&A Expenditures \$840,000



LINGMAN LAKE PROJECT HISTORY

1939-42: gold discovered in vicinity of Lingman Lake mine, probably South Zone area.

1945: diamond drilling commences.

1946: shaft sinking commences.

1945-49: 72 holes drilled totaling 10,562 m. 3 levels at 46 m, 84 m and 12 m depths (150L, 275L, 400L) established, serviced by 131 m deep shaft.

Total workings 998 m of drifts, 235 m of X-cuts, 134 m of raises

At mine closure 1949, 134,263 tonnes grading 14.1 g/t (60, 865 oz)

1949-72: mine shuttered

1972-73: mobilized for 2-hole drill program, 73-1 completed intersecting North Zone at 283.46 with a 1.5 m interval grading 325.7 g/t Au, the second hole was not completed due to rig fire

1987-89: Massive Energy-Agassiz Resources-Twin Gold Mines drilled 176- holes totaling 28,847 m

Project closure

1996: Echo Bay Mines drilled 11-holes totaling 2,051 m outside the current four patented claims.

2013: Signature Resources acquired Lingman lake Mine patents from Cool Minerals and surrounding Crown staked claims from Anaconda Gold. Property consists of 16 claims totaling 617 ha.

2017-2023: various staking campaigns and acquisitions by Signature Resources resulted in land package of 1,300 staked claims, 4 mineral and surface rights patents, and 14 mineral rights patents totaling approximately 24,821 ha.

2024: Updated Geologic Model and completed 4,730 m drilling program and field sampling program

2025: Completed Initial 43-101 Resource Estimate for the Lingman Lake Project with data through May 31, 2025

Management

J. Dan Denbow, CFA, CEO, President and Director has served as CEO of the Company since November 2022 and was appointed a director to the board of directors in 2021. Prior to joining Signature's board he spent more than thirty years in capital markets with his most recent experience associated with USAA Investment Management Company. As a portfolio manager for USAA, Mr. Denbow was responsible for managing over US \$4 billion in three strategies: domestic dividend, global dividend, and the USAA Precious Metals and Minerals Fund. The USAA Precious Metals Fund received numerous awards during his tenure. He also serves as a director for Denver Gold Group and is an independent director of Gemdale Gold, an exploration company with several assets in Finland. He is president of Denbow Oil & Gas. Mr. Denbow holds an MBA from Texas Christian University Neeley School of Business and is a CFA charter holder.

Rebecca Hudson, CFO has 23-years experience as a Chartered Professional Accountant having worked as a senior auditor with firms Grant Thornton LLP in Toronto, Canada and PricewaterhouseCoopers in the Dominican Republic. She is currently the CFO of EV Minerals Corporation, Nova Mentis Life Science Corp., and a private drilling company, Andean Drilling Services Inc. Ms. Hudson also works as a consultant with Grove Corporate Services where she acts as Controller for several clients. She has held managerial positions at mining companies Xstrata and Falconbridge, completed project-based work for IAMGOLD at its offices in Quito, Ecuador, and was the Controller of Royal Nickel Corporation and Barkerville Gold Mines Ltd. Ms. Hudson formerly served as the CFO of TerrAscend Corp., Hornby Bay Mineral Exploration Ltd., Wabi Exploration Inc., Lithium One Inc., and Claim Post Resources Inc. Ms. Hudson has both her Bachelor of Arts and Master's Degrees from the School of Accountancy at the University of Waterloo. She is fluent in English and Spanish.

Walter Hanych, P.Geo. HEAD GEOLOGIST is a Professional Geologist registered in Ontario and has more than forty years of experience in the exploration industry from grass-roots projects to advanced mine feasibility projects, including corporate structure and financing. Mr. Hanych has a broad range of mineral exploration experience in gold, base metal, nickel, uranium, PGE, and industrial mineral exploration throughout Canada and internationally. He has worked or consulted for major and junior companies, including INCO, Falconbridge Nickel, and Copper Fox Metals. Mr. Hanych was involved with the team that initially recognized the Cote Lake deposit (IAMGOLD Corporation) as a gold mineralized brecciated intrusive system. Mr. Hanych holds an Honours Bachelor of Science Degree in Geology from Laurentian University. He is a member of the Professional Geoscientists of Ontario and the Society of Economic Geologists.

Board of Directors

Paolo Lostritto, P.Eng., Chairman of the Board has an extensive background in mining capital markets and working with companies across the globe since 1997. Paolo has helped assess different companies/projects and helped finance them as they advanced through exploration, development, and production. Some of the companies where Paolo was involved early include: Kirkland Lake Gold, Novagold and Lake Shore Gold in 2004; Romarco Minerals in 2006; Victoria Gold and Volta Resources in 2009. Mr. Lostritto is currently serving as the Chief Executive Officer for Sailfish Royalty Corp. which has exposure to a number of sizable royalties including the Spring Valley gold project in Nevada and the higher-grade San Albino mine in Nicaragua. Paolo is a co-founder and board member of Interstellar Mining Inc which is focused on leveraging a leading Canadian space mining robotics group (Deltion Innovations Ltd.) along with Watts, Griffis, and McOuat Ltd.'s space mining group to develop and produce energy commercially for the rapidly growing space industry. Over his career, Mr. Lostritto was a Director of the Mining Equity Research at National Bank Financial and worked in equity research at Wellington West, Scotia Capital and TD Securities. He served as an Independent Director at Savary Gold Corp. which was sold to SEMAFO in 2019. Mr. Lostritto holds a Bachelor of Applied Science in Geological and Mineral Engineering in Rock Mechanics from the University of Toronto and he is a registered Professional Engineer in the Province of Ontario.

J. Dan Denbow, CFA Director, President and CEO

Stephen Timms, Director, is currently an IBM Canada executive who brings 25-plus years of his broad-based functional expertise in operations, business transformation, change management, corporate strategy and finance. Mr. Timms drives made-in-Canada innovation to IBM which helps accelerate social and economic growth in Canada through a proven model working cooperatively and collaboratively with industry, governments and academia. These initiatives leverage transformational and emerging technology including high-performance computing, advanced data analytics, AI and machine learning, digital trust technologies such as Blockchain, and now Quantum Computing. Mr. Timms is a results-oriented problem solver who has a proven ability to successfully analyze an organization's critical business requirements, lead change, implement best practices, and execute disciplined performance management systems to drive successful business outcomes. In his career with IBM Mr. Timms has participated in numerous executive, management and leadership development courses.

Lisa Davis, Director brings to Signature's board significant perspective from the industry as the Chief Executive Officer of Peartree Securities Inc., a boutique financing and advisory firm focused on the junior Canadian resource sector. Drawing on the in-depth knowledge of securities regulation gained in part while on secondment to the Ontario Securities Commission Lisa is also responsible for the legal and compliance aspects of the firm's business as well as for PearTree Financial Services Ltd., the originator and leading provider of flow through donation financing services in Canada. Prior to joining Peartree, Lisa was General Counsel for a specialized investment fund business with more than \$3B in assets under administration. A graduate of Osgoode Hall Law School, Lisa was a partner at Fraser Milner Casgrain LLP (currently Dentons) where she specialized in corporate and securities law. Lisa has earned the ICD.D designation from the Institute of Corporate Directors and has served as a Director of the Prospectors & Developers Association of Canada (PDAC) as well as a member of the PDAC's Executive Committee and co-chair of the Finance & Taxation Committee of the PDAC.

Board of Directors

John Hayes M.Sc., MBA, P.Geo, Director, is a professional geologist with over 20 years of exploration, and many years of capital markets experience. John worked for ten years in mining equity research at BMO Capital Markets and at the time of his retirement in 2014 was a managing director covering global precious and base metal companies as they advanced projects from exploration to production. Most recently, Mr. Hayes served in senior roles at Pretium Resources and Osisko Mining and was a Director of Maritime Resources Corp. John graduated from Memorial University of Newfoundland with an Honours Bachelor of Science in Geology (1989) and a Master of Science in Geology (1997). He also holds an MBA from Dalhousie University (2003) and is a member (P. Geo.) of the Professional Engineers and Geoscientists Newfoundland and Labrador.

Matthew Goodman, CFA, Director, Mr. Goodman has over 12 years of experience in capital markets and junior mining. Matthew joined Dundee Corporation in 2013 as a member of Goodman & Company, Investment Counsel, where he was responsible for evaluating strategic resource investment opportunities for Dundee Corporation and the Goodman Gold Trust. Matthew was a founding member of Dundee Private Equity and part of the team that launched the first Canadian Special Purpose Acquisition Company, raising over C\$100 million in its IPO. In September 2018, Mr. Goodman rejoined Goodman & Company, Investment Counsel, as an associate and, subsequently, as lead portfolio manager of the CMP and DGRC funds. Throughout Matthew's tenure at Dundee, he has been a part of the corporate development team, overseeing Dundee's most significant on-balance sheet assets. Matthew's prior background includes in-field mineral exploration and equity capital markets experience. Matthew is a CFA Charterholder and holds an Honours Bachelor of Arts degree, specializing in Global Economics and Microeconomic Analysis from York University.

Advisors

John Leliever, FOUNDER & CONSULTANT, is the founder of Signature Resources and is a third generation “Prospector” mineral explorationist with over 40 years’ experience in the industry. In the past, he has worked in the remote wilderness of Canada servicing the industry through his contracting companies specializing in surface exploration development to include owning and operating diamond drill rigs. For the last 12-years he has been directly involved in corporate development of exploration stage private and public companies. Mr. Leliever has been responsible for discoveries resulting in significant property acquisitions, including involvement in the now famous Cote Lake acquired by IAMGOLD and Trelawney Mining in consolidating a portion of the lands and NSR's. Mr. Leliever’s extensive knowledge of the exploration logistics and planning, particularly with remote locations and his corporate background have been the key to his success.

Dr. Scott Jobin-Bevans, PhD, P.Geo., has more than 25 years in worldwide mineral exploration and has public company experience as a director, officer and technical advisor. Scott is currently Co-Founder, Chairman and CEO of Caracle Creek International Consulting. He has expertise in project evaluation and in leading multi-million dollar projects from generative stage through advanced exploration and into development. Dr. Jobin-Bevans is an advisor and member of the board of directors for a number of public and private companies and held the volunteer position of President (2010-2012) of the Prospectors and Developers Association of Canada.

Stacy Freudigmann P.Eng. F.Aus.IMM. is the CEO and Founder of the Canadian Engineering Company (Canenco), who has been providing consulting services to the mining industry since 2010. Stacy is an SME, project manager, process manager and metallurgical engineer with 30 years of mining industry experience. He brings with him the proven ability to oversee large engineering studies and construction projects, as well as managing complex metallurgical, hydrometallurgical, pyrometallurgical, sorting and process issues. He has assisted numerous mining companies around the world such as AngloAmerican, Sabina Gold & Silver, Candente Copper, Nyrstar, Dalradian Gold, Maritime Resources, etc. Other senior operational, technical and management experience includes BHP, Pebble Limited Partnership, Hunter Dickinson Inc. and Placer Dome.



End of Document
www.signatureresources.ca

